

OpenSUSE Telnet Server Setup

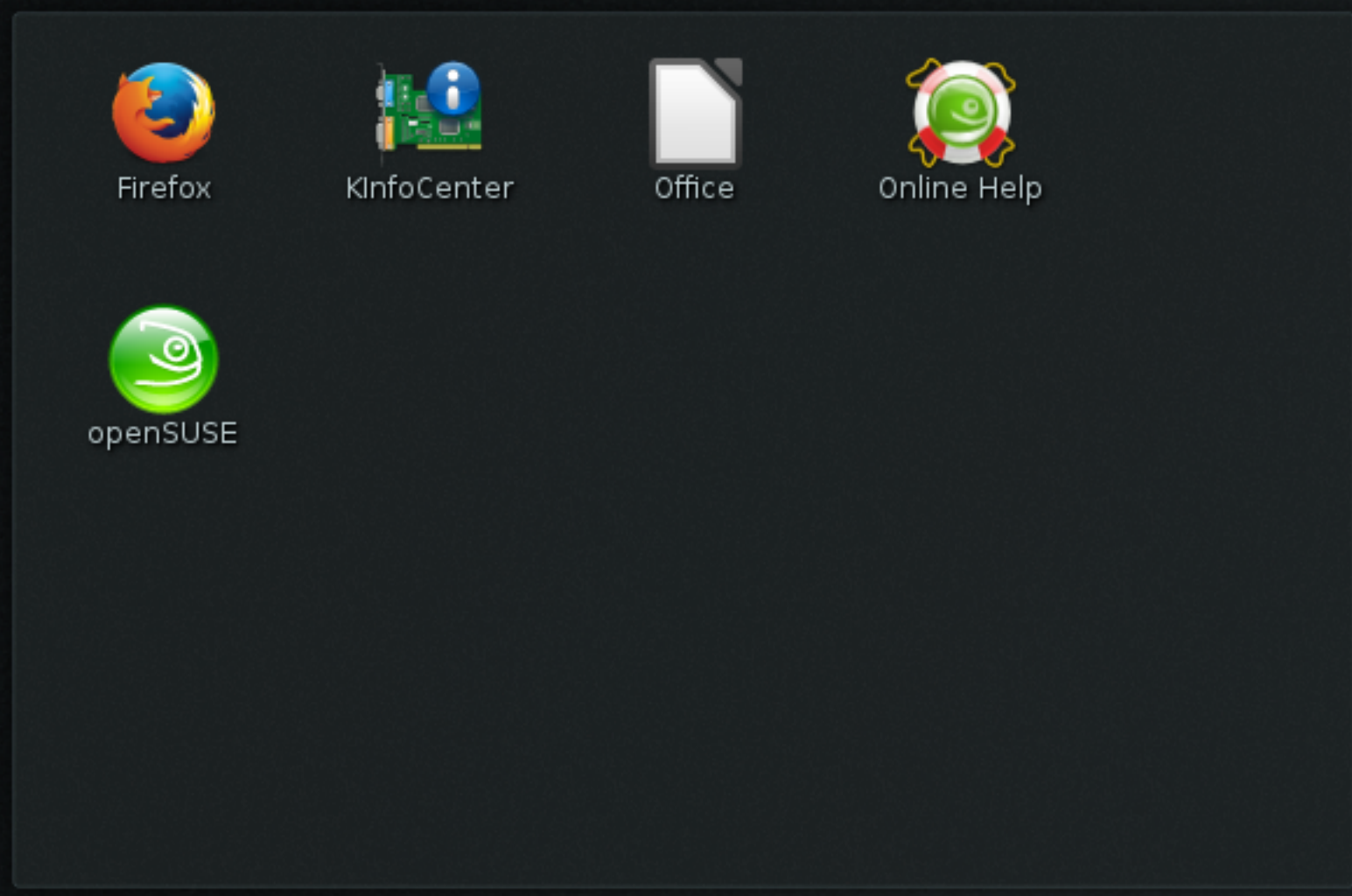
The presentation will setup the telnet server on OpenSUSE 13.1. Normally, telnet is not a good idea. OK, the only reason the presentation is configuring telnet is for lab credit.

Preuss
4/28/2014

Firefox KInfoCenter Office Online Help

openSUSE

The presentation logs into OpenSUSE.

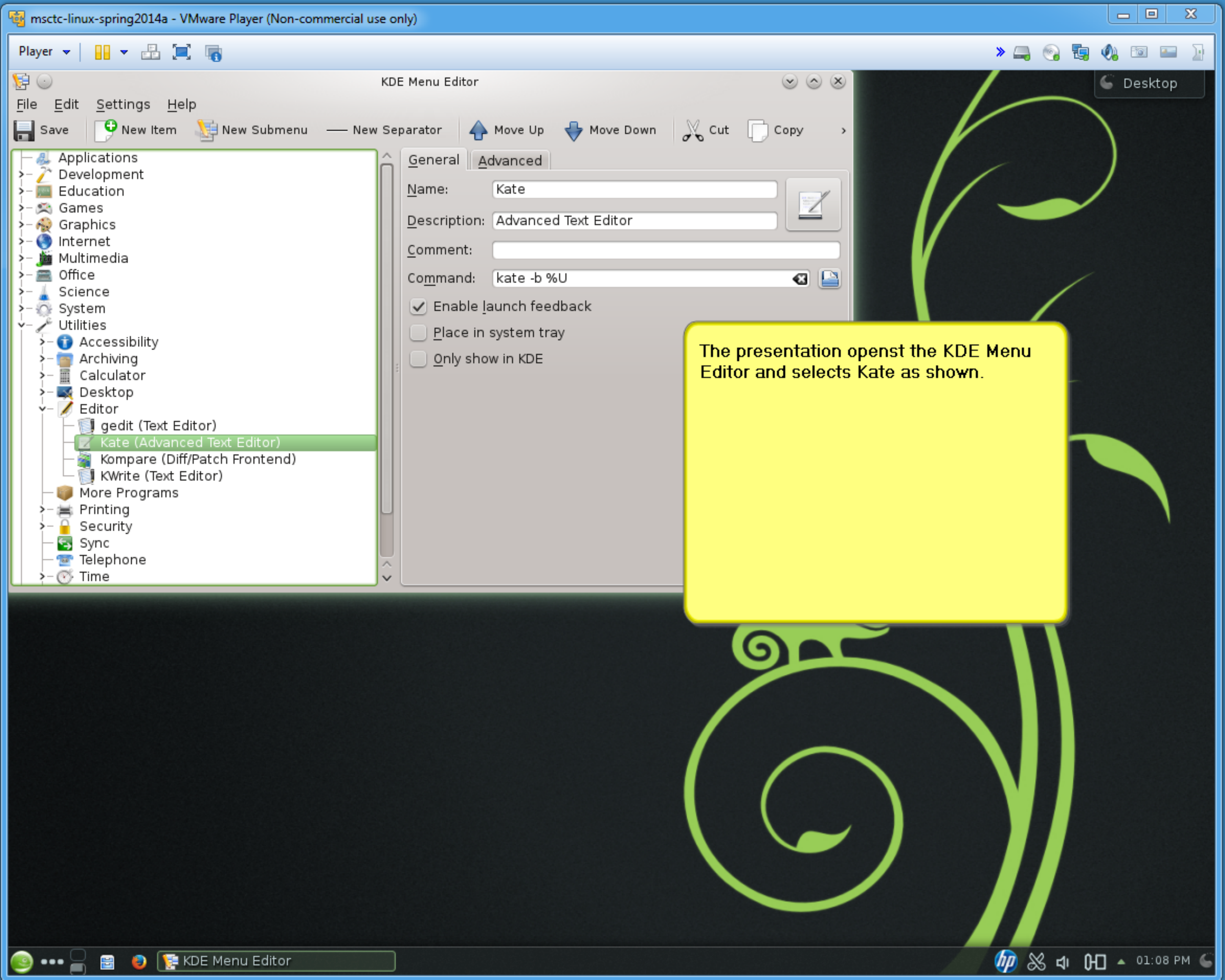


A dark grey application launcher panel containing five icons: Firefox (orange and blue globe), KInfoCenter (blue and green circuit board), Office (white document), Online Help (green gear with a white 'e'), and openSUSE (green eye-like logo).

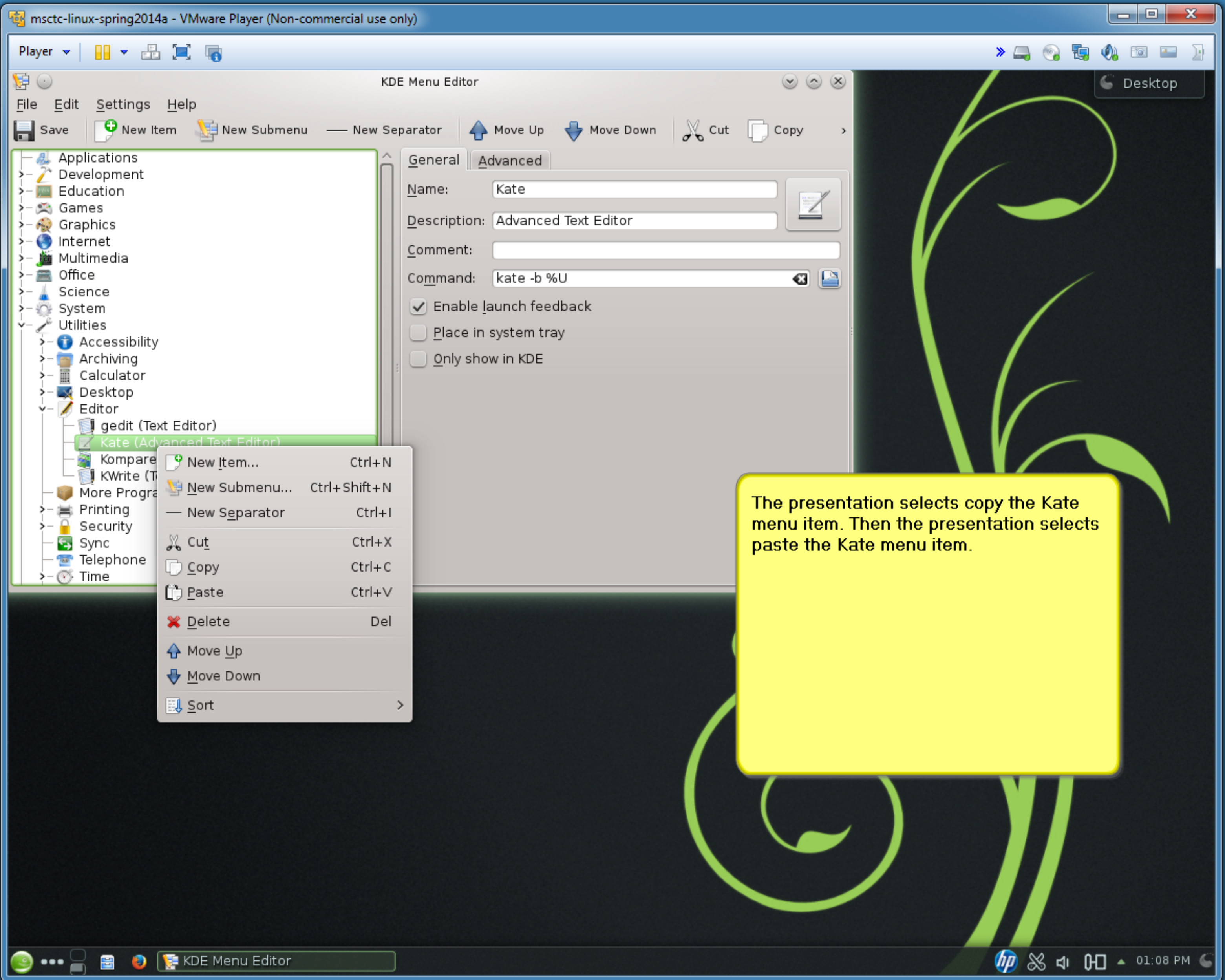
Desktop

The presentation right clicks on the green geco image. The presentation will select Edit Applications.

- Edit Applications...
- Switch to Classic Menu Style
- Application Launcher Settings Alt+D, S
- Panel Options >



The presentation openst the KDE Menu Editor and selects Kate as shown.



- Applications
- Development
- Education
- Games
- Graphics
- Internet
- Multimedia
- Office
- Science
- System
- Utilities
 - Accessibility
 - Archiving
 - Calculator
 - Desktop
 - Editor
 - gedit (Text Editor)
 - Kate (Advanced Text Editor)**
 - Kompare
 - KWrite (Text Editor)
 - More Programs
 - Printing
 - Security
 - Sync
 - Telephone
 - Time

General Advanced

Name: Kate

Description: Advanced Text Editor

Comment:

Command: kate -b %U

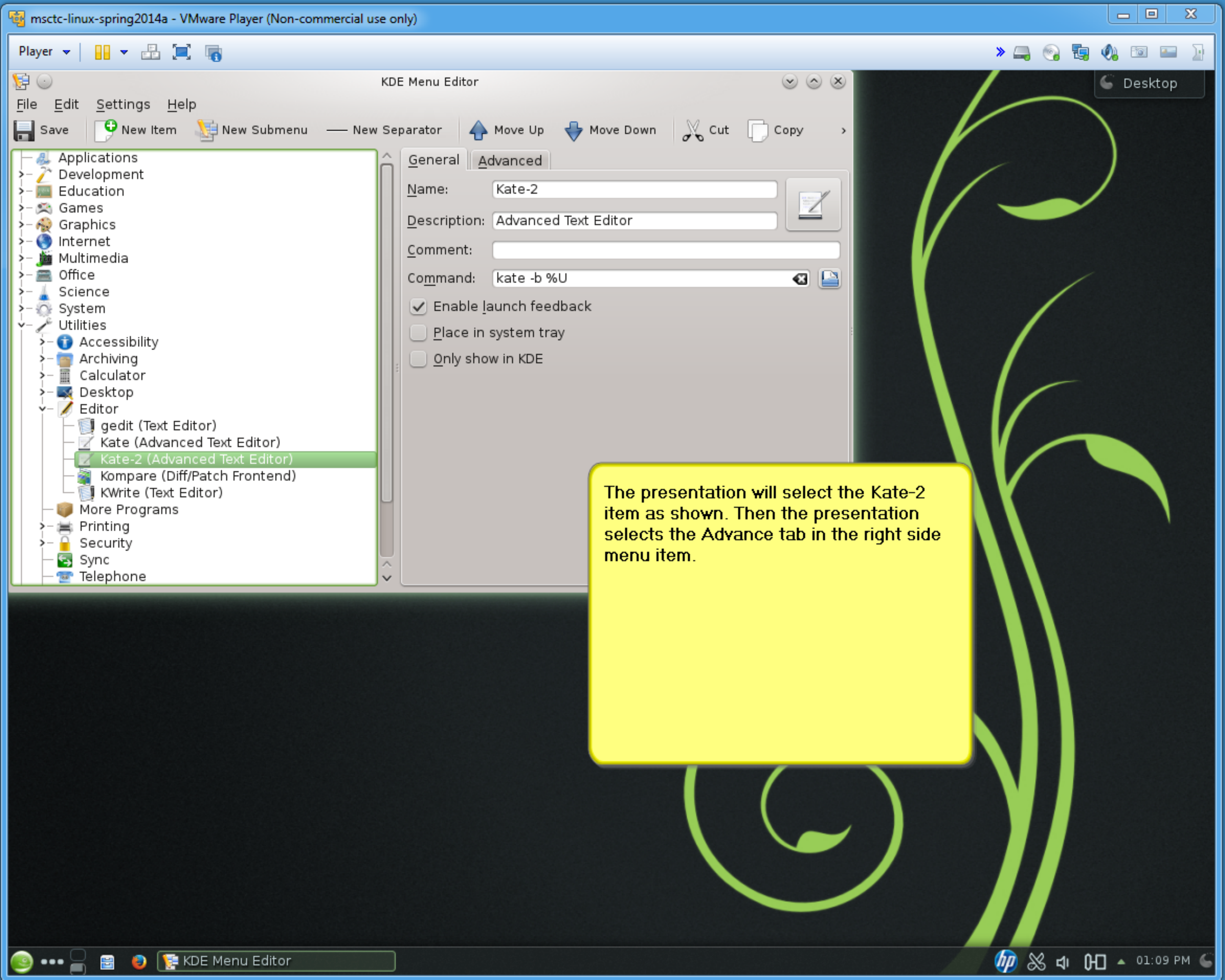
Enable launch feedback

Place in system tray

Only show in KDE

- New Item... Ctrl+N
- New Submenu... Ctrl+Shift+N
- New Separator Ctrl+I
- Cut Ctrl+X
- Copy Ctrl+C
- Paste Ctrl+V
- Delete Del
- Move Up
- Move Down
- Sort

The presentation selects copy the Kate menu item. Then the presentation selects paste the Kate menu item.



- Applications
- Development
- Education
- Games
- Graphics
- Internet
- Multimedia
- Office
- Science
- System
- Utilities
 - Accessibility
 - Archiving
 - Calculator
 - Desktop
 - Editor
 - gedit (Text Editor)
 - Kate (Advanced Text Editor)
 - Kate-2 (Advanced Text Editor)**
 - Kompare (Diff/Patch Frontend)
 - KWrite (Text Editor)
 - More Programs
 - Printing
 - Security
 - Sync
 - Telephone

General Advanced

Name: Kate-2

Description: Advanced Text Editor

Comment:

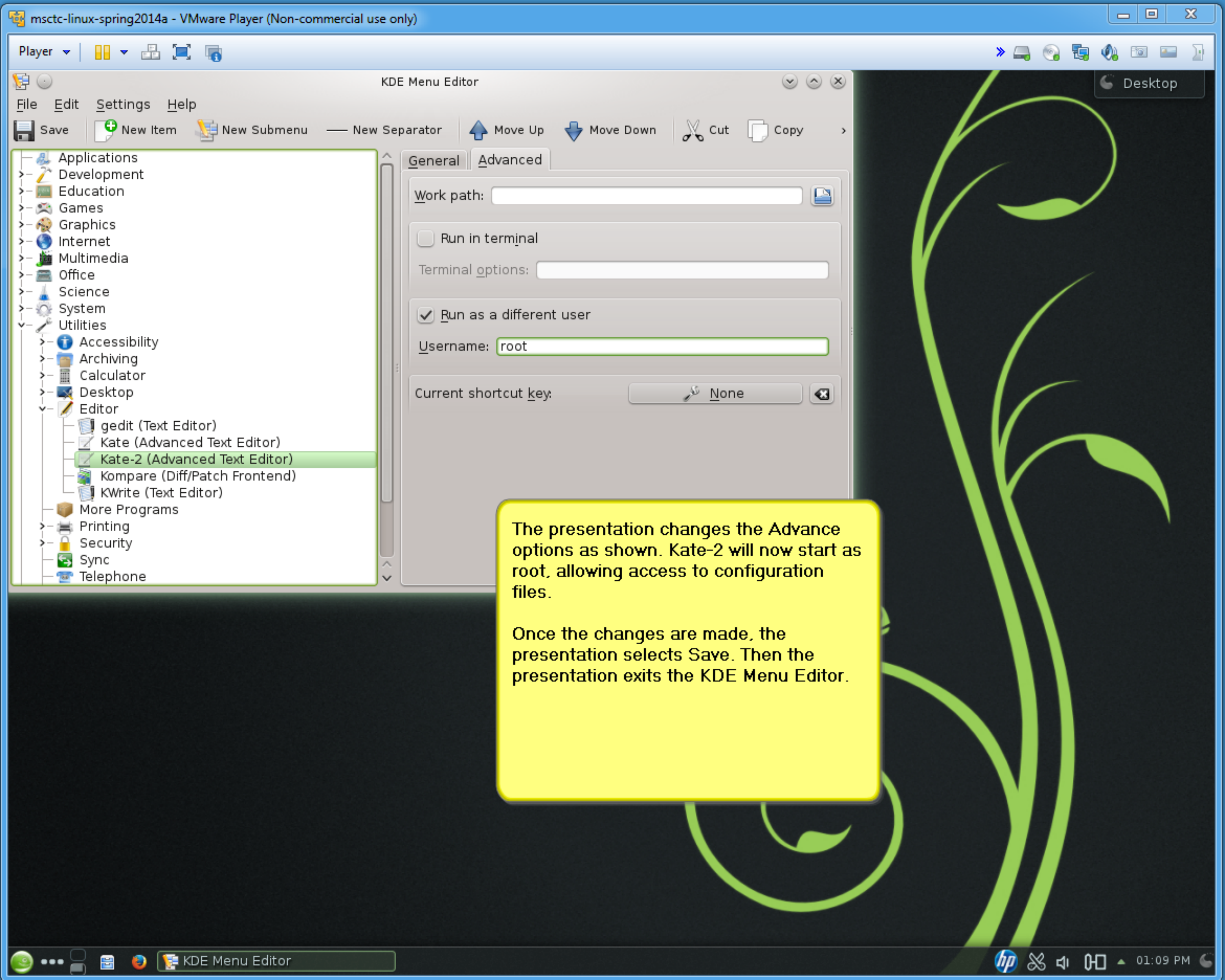
Command: kate -b %U

Enable launch feedback

Place in system tray

Only show in KDE

The presentation will select the Kate-2 item as shown. Then the presentation selects the Advance tab in the right side menu item.



KDE Menu Editor

Desktop

File Edit Settings Help

Save New Item New Submenu New Separator Move Up Move Down Cut Copy

- Applications
- Development
- Education
- Games
- Graphics
- Internet
- Multimedia
- Office
- Science
- System
- Utilities
 - Accessibility
 - Archiving
 - Calculator
 - Desktop
 - Editor
 - gedit (Text Editor)
 - Kate (Advanced Text Editor)
 - Kate-2 (Advanced Text Editor)**
 - Kompare (Diff/Patch Frontend)
 - KWrite (Text Editor)
 - More Programs
 - Printing
 - Security
 - Sync
 - Telephone

General Advanced

Work path:

Run in terminal

Terminal options:

Run as a different user

Username:

Current shortcut key:

The presentation changes the Advance options as shown. Kate-2 will now start as root, allowing access to configuration files.

Once the changes are made, the presentation selects Save. Then the presentation exits the KDE Menu Editor.

Desktop icons:

- Firefox
- KInfoCenter
- Office
- Online Help
- openSUSE

Tim Preuss (preuss) on msctc-linux-spring2014 openSUSE

Search:

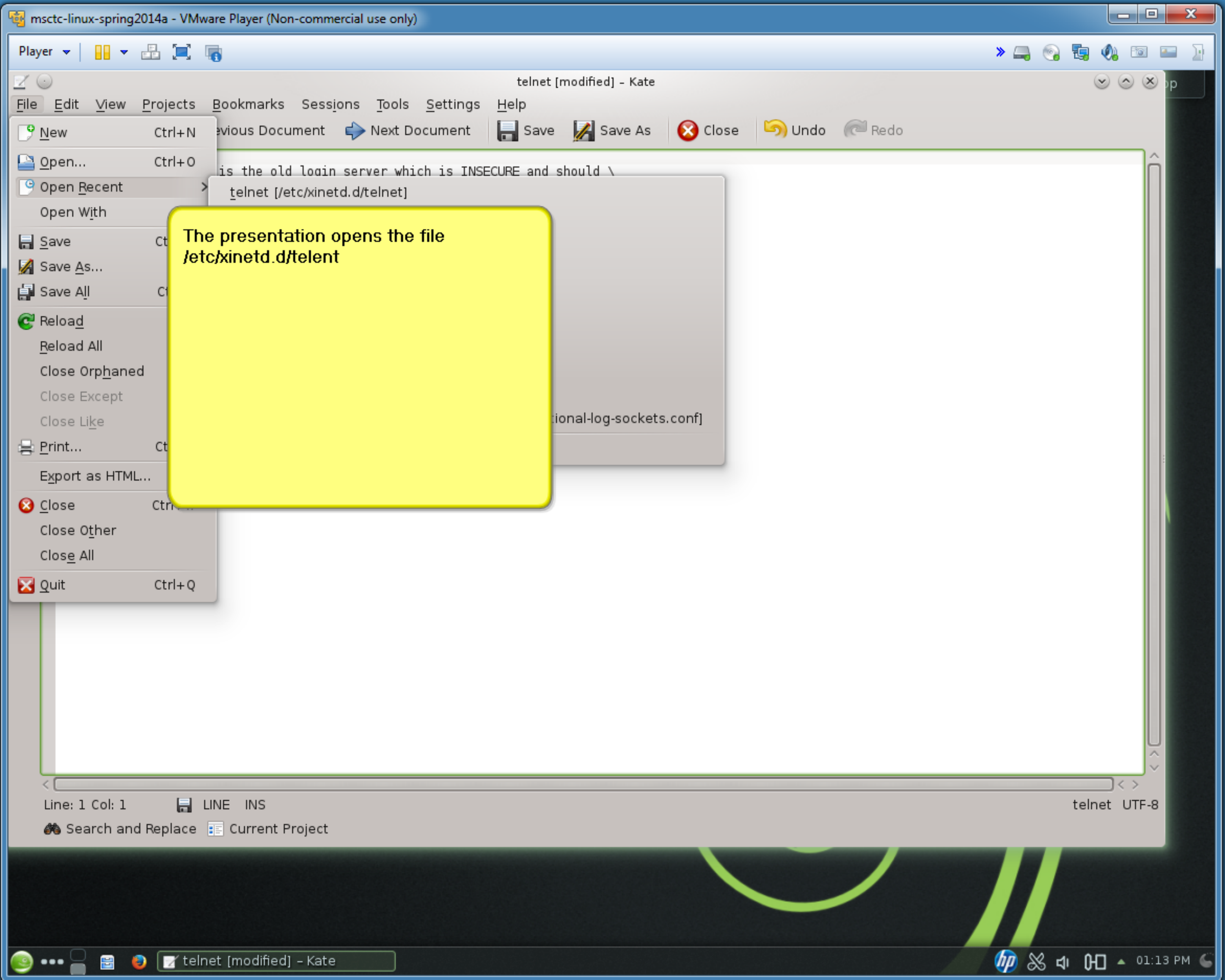
All Applications > Utilities > Editor

- Text Editor gedit
- Advanced Text Editor Kate
- Advanced Text Editor Kate-2
- Diff/Patch Frontend
- Text Editor KWrite

The presentation opens the Kate-2 menu item. The presentation will be asked for root's password.

Taskbar icons:

- Favorites
- Applications
- Computer
- Recently Used
- Leave



The presentation opens the file
`/etc/xinetd.d/telnet`

is the old login server which is INSECURE and should \

`telnet [/etc/xinetd.d/telnet]`

ional-log-sockets.conf]

Line: 1 Col: 1 LINE INS

telnet UTF-8

Search and Replace Current Project

Player ▾ | [Icons] [Icons] [Icons] [Icons] [Icons]

telnet [modified] - Kate

File Edit View Projects Bookmarks Sessions Tools Settings Help

New Open Previous Document Next Document Save Save As Close Undo Redo

```
# default: off
# description: Telnet is the old login server which is INSECURE and should \
#> therefore not be used. Use secure shell (openssh).
#> If you need telnetd not to "keep-alives" (e.g. if it runs over a ISDN \
#> uplink), add "-n". See 'man telnetd' for more details.
service telnet
{
    > socket_type      = stream
    > protocol        = tcp
    > wait            = no
    > user            = root
    > server          = /usr/sbin/in.telnetd
    > disable>>>    = no
}

# /etc/xinetd.d/telnet
```

Line: 1 Col: 1 [Icons] LINE INS telnet UTF-8

Search and Replace [Icons] Current Project

Documents Projects

hp [Icons] [Icons] [Icons] [Icons] 01:13 PM

The presentation edits the `/etc/xinetd.d/telnet` as shown.

Once the lab is done, changing the `disable` option to `yes` is a very good idea.


```
# default: off
# description: Telnet is the old login server which is INSECURE and should \
#> therefore not be used. Use secure shell (openssh).
#> If you need telnetd not to "keep-alives" (e.g. if it runs over a ISDN \
#> uplink), add "-n". See 'man telnetd' for more details.
service telnet
{
    > socket_type      = stream
    > protocol        = tcp
    > wait            = no
    > user            = root
    > server          = /usr/
    > disable>>>    = no
}

# /etc/xinetd.d/telnet
```

The presentation saves the file with changes.

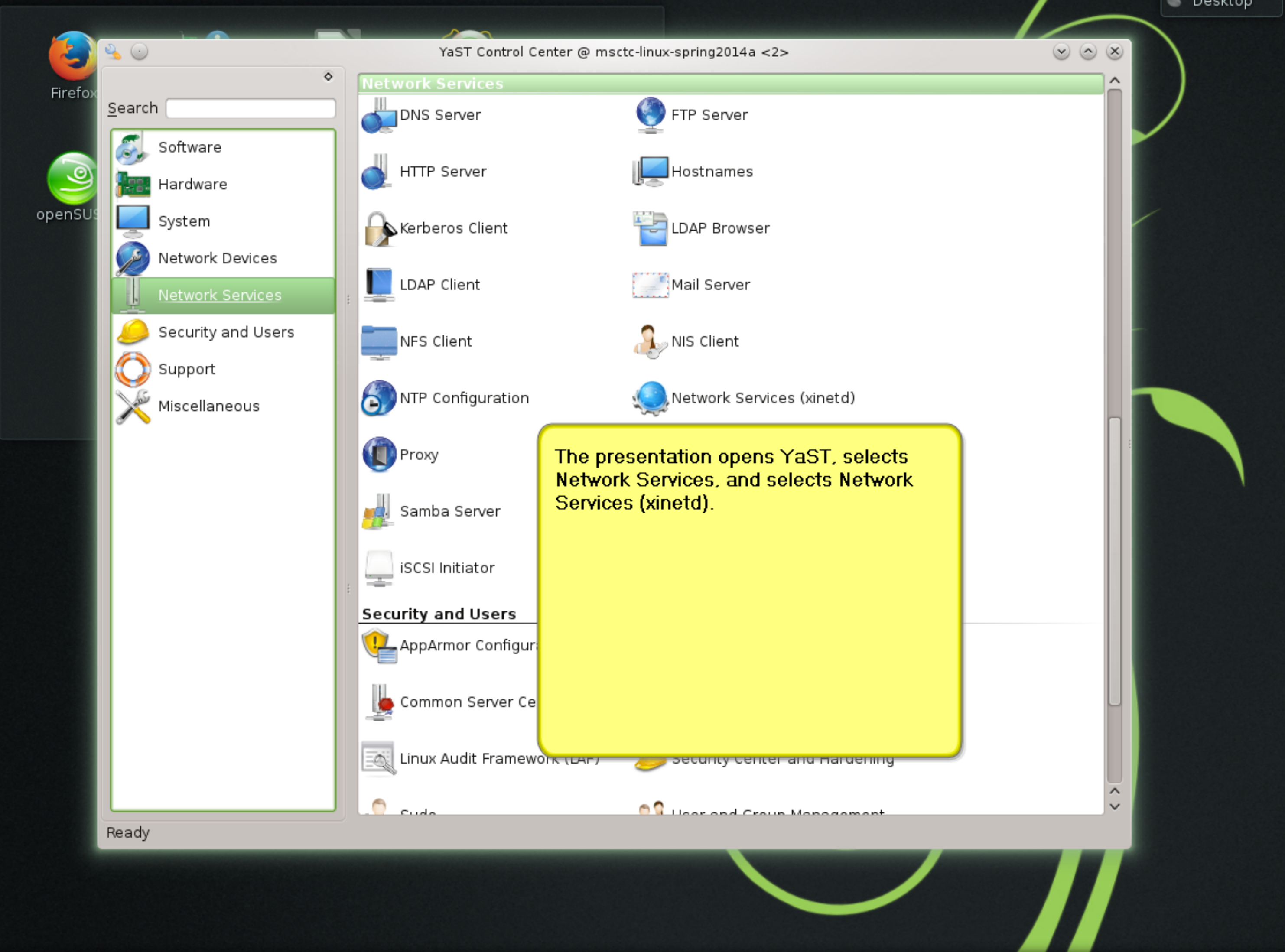
Save Documents - Kate

The following documents have been modified. Do you want to save them?

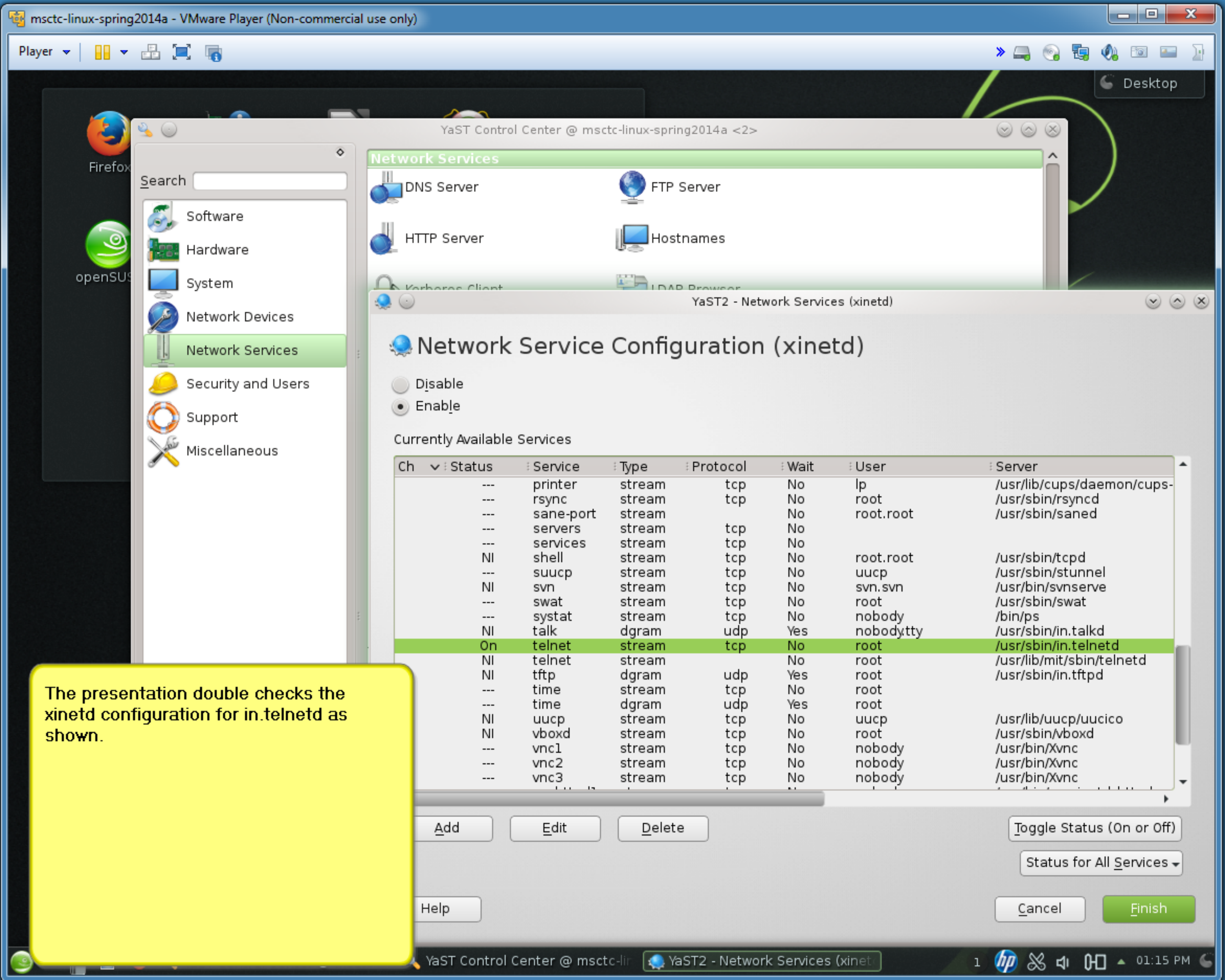
| Documents | Location |
|-------------------------------------|-----------------------------|
| <input checked="" type="checkbox"/> | telnet /etc/xinetd.d/telnet |

Select All

Save Discard Cancel



The presentation opens YaST, selects Network Services, and selects Network Services (xinetd).



Search

- Software
- Hardware
- System
- Network Devices
- Network Services**
- Security and Users
- Support
- Miscellaneous

Network Services

- DNS Server
- FTP Server
- HTTP Server
- Hostnames
- Kerberos Client
- LDAP Browser

Network Service Configuration (xinetd)

- Disable
- Enable

Currently Available Services

| Ch | Status | Service | Type | Protocol | Wait | User | Server |
|-----|--------|-----------|--------|----------|------|-----------|----------------------------|
| --- | --- | printer | stream | tcp | No | lp | /usr/lib/cups/daemon/cups- |
| --- | --- | rsync | stream | tcp | No | root | /usr/sbin/rsyncd |
| --- | --- | sane-port | stream | | No | root.root | /usr/sbin/saned |
| --- | --- | servers | stream | tcp | No | | |
| --- | --- | services | stream | tcp | No | | |
| NI | --- | shell | stream | tcp | No | root.root | /usr/sbin/tcpd |
| --- | --- | suucp | stream | tcp | No | uucp | /usr/sbin/stunnel |
| NI | --- | svn | stream | tcp | No | svn.svn | /usr/bin/svnserve |
| --- | --- | swat | stream | tcp | No | root | /usr/sbin/swat |
| --- | --- | systat | stream | tcp | No | nobody | /bin/ps |
| NI | --- | talk | dgram | udp | Yes | nobodytty | /usr/sbin/in.talkd |
| --- | On | telnet | stream | tcp | No | root | /usr/sbin/in.telnetd |
| NI | --- | telnet | stream | | No | root | /usr/lib/mit/sbin/telnetd |
| NI | --- | tftp | dgram | udp | Yes | root | /usr/sbin/in.tftpd |
| --- | --- | time | stream | tcp | No | root | |
| --- | --- | time | dgram | udp | Yes | root | |
| NI | --- | uucp | stream | tcp | No | uucp | /usr/lib/uucp/uucico |
| NI | --- | vboxd | stream | tcp | No | root | /usr/sbin/vboxd |
| --- | --- | vnc1 | stream | tcp | No | nobody | /usr/bin/Xvnc |
| --- | --- | vnc2 | stream | tcp | No | nobody | /usr/bin/Xvnc |
| --- | --- | vnc3 | stream | tcp | No | nobody | /usr/bin/Xvnc |

Add Edit Delete

Toggle Status (On or Off)

Status for All Services

Help Cancel Finish

The presentation double checks the xinetd configuration for in.telnetd as shown.

Search

- Software
- Hardware
- System
- Network Devices
- Network Services
- Security and Users**
- Support
- Miscellaneous

- LDAP Client
- NFS Client
- NTP Configuration
- Proxy
- Samba Server
- iSCSI Initiator
- Mail Server
- NIS Client
- Network Services (xinetd)
- Remote Administration (VNC)
- Windows Domain Membership

Security and Users

- AppArmor Configuration
- Common Server Certificate
- Linux Audit Framework (LAF)
- Sudo
- CA Management
- Firewall

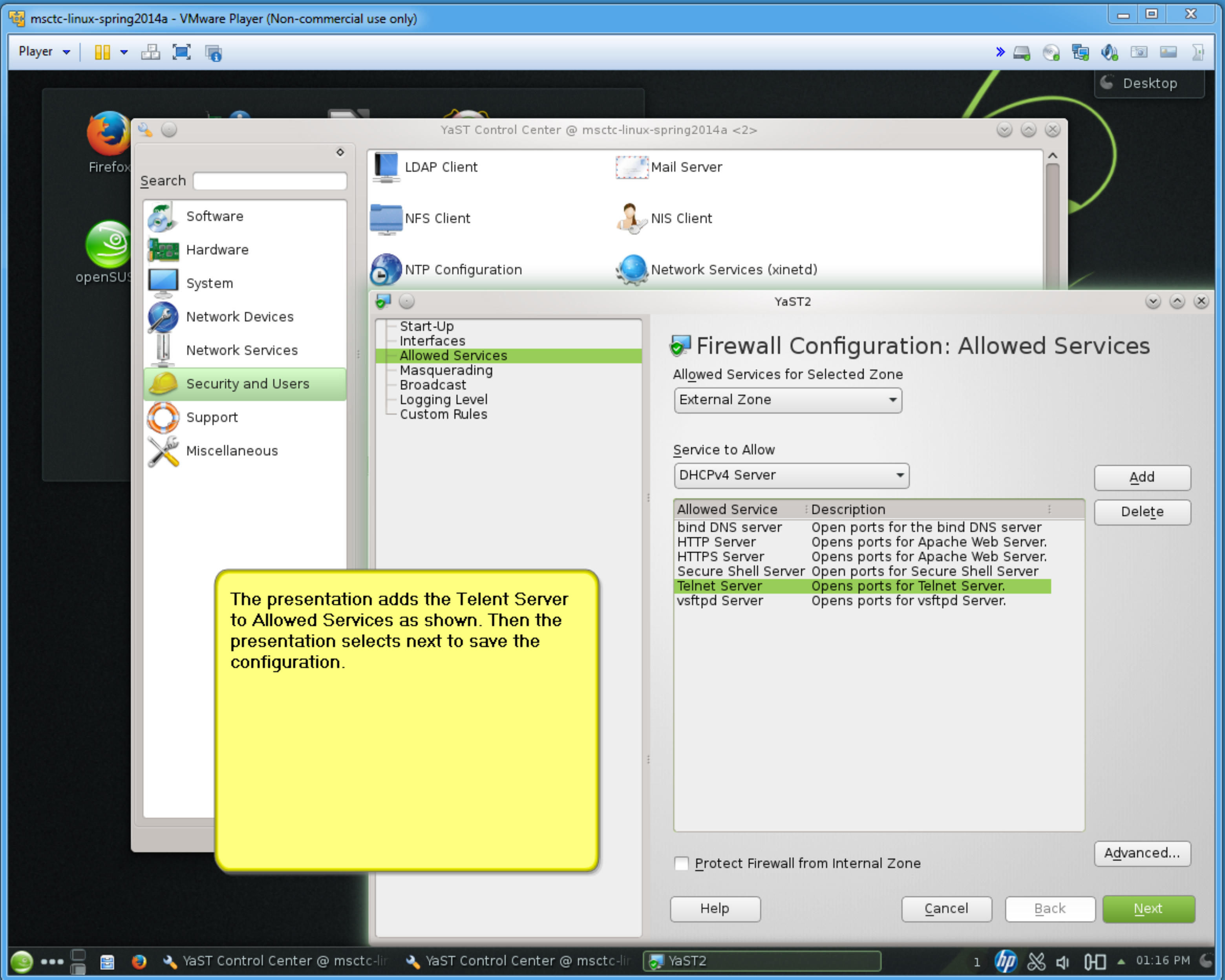
Support

- Release Notes

Miscellaneous

- System Log

The presentation selects Security and Users from the left column. The presentation selects Firewall from the right column.



The presentation adds the Telnet Server to Allowed Services as shown. Then the presentation selects next to save the configuration.

YaST Control Center @ msctc-linux-spring2014a <2>

- LDAP Client
- Mail Server
- NFS Client
- NIS Client
- NTP Configuration
- Network Services (xinetd)

YaST2

- Start-Up
- Interfaces
- Allowed Services**
- Masquerading
- Broadcast
- Logging Level
- Custom Rules

Firewall Configuration: Allowed Services

Allowed Services for Selected Zone

External Zone

Service to Allow

DHCPv4 Server

Add

Delete

| Allowed Service | Description |
|----------------------|---------------------------------------|
| bind DNS server | Open ports for the bind DNS server |
| HTTP Server | Opens ports for Apache Web Server. |
| HTTPS Server | Opens ports for Apache Web Server. |
| Secure Shell Server | Open ports for Secure Shell Server |
| Telnet Server | Opens ports for Telnet Server. |
| vsftpd Server | Opens ports for vsftpd Server. |

Protect Firewall from Internal Zone

Advanced...

Help Cancel Back **Next**