

How To Setup Windows 7 Remote Desktop for Server Connection

These slides show the recommend settings for Remote Desktop for Mr. Preuss' classes at MSCTC and MSUM.

Preuss

9/24/2012



Recycle Bin



Adobe Reader
X



LibreOffice
3.6



Mozilla
Firefox

This is Windows 7.



Recycle Bin



Adobe Reader
X



- Mozilla Firefox
- Notepad
- Getting Started
- Connect to a Projector
- Calculator
- Sticky Notes
- LibreOffice Writer
- Snipping Tool
- Paint
- Remote Desktop Connection
- XPS Viewer
- Windows Fax and Scan
- Magnifier
- LibreOffice 3.6
- Computer Management
- Cisco AnyConnect VPN Client

- preuss
- Documents
- Pictures
- Music
- Videos
- Downloads
- Games
- Computer
- Network
- Control Panel
- Devices and Printers
- Default Programs
- Administrative Tools
- Help and Support
- Run...

All Programs

Search programs and files

Shut down

Open the menu by clicking on the Windows orb in the lower left corner to get a similar menu.

Select the All Programs button near the list bottom.



Recycle Bin



Adobe Reader X



- Adobe Reader X
- Cisco AnyConnect VPN Client
- Default Programs
- Desktop Gadget Gallery
- Internet Explorer (64-bit)
- Internet Explorer
- Microsoft Security Essentials
- Mozilla Firefox
- Windows Anytime Upgrade
- Windows DVD Maker
- Windows Fax and Scan
- Windows Media Center
- Windows Media Player
- Windows Update
- XPS Viewer
- Accessories
- Administrative Tools
- Cisco
- Games
- LibreOffice 3.6
- Maintenance
- Startup

- preuss
- Documents
- Pictures
- Music
- Videos
- Downloads
- Games
- Computer
- Network
- Control Panel
- Devices and Printers
- Default Programs
- Administrative Tools ▶
- Help and Support
- Run...

Select the Accessories option menu.



Recycle Bin



Adobe Reader
X



- Windows Anytime Upgrade
- Windows DVD Maker
- Windows Fax and Scan
- Windows Media Center
- Windows Media Player
- Windows Update
- XPS Viewer
- Accessories
 - Calculator
 - Command Prompt
 - Connect to a Network Projector
 - Connect to a Projector
 - Getting Started
 - Math Input Panel
 - Notepad
 - Paint
 - Remote Desktop Connection
 - Run
 - Snipping Tool
 - Sound Recorder
 - Sticky Notes
 - Sync Center
 - Windows Explorer
 - WordPad
- Ease of Access
- System Tools
- Tablet PC
- Windows PowerShell

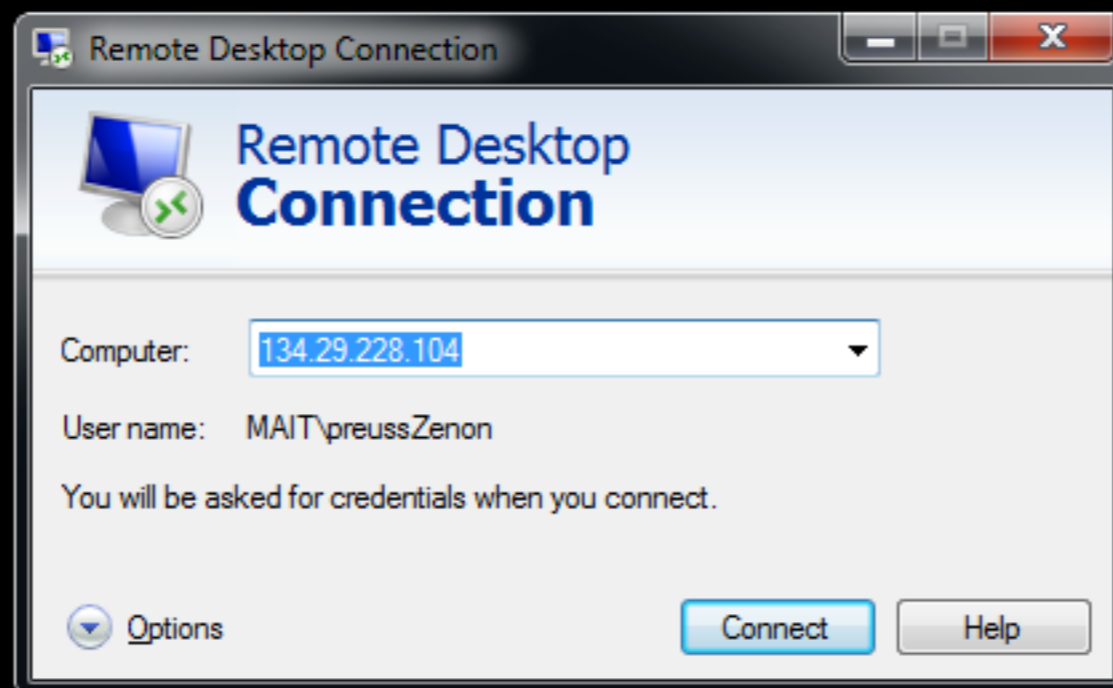
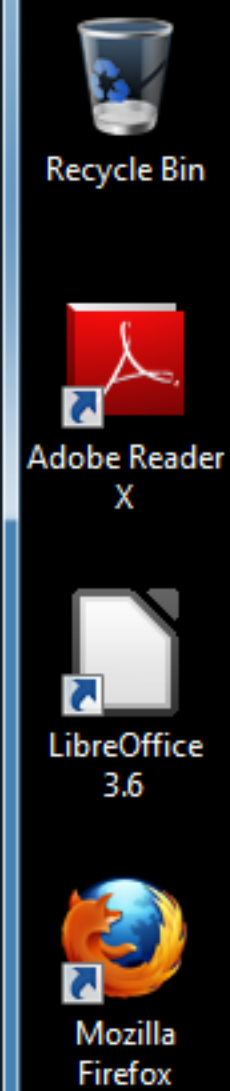
Back

Search programs and files

Shut down

- preuss
- Documents
- Pictures
- Music
- Videos
- Downloads
- Games
- Computer
- Network
- Control Panel
- Devices and Printers
- Default Programs
- Administrative Tools
- Help and Support
- Run...

Select Remote Desktop Connection option from the menu.

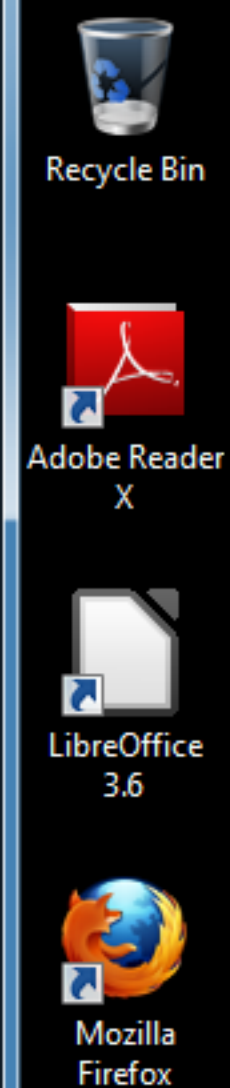


Enter the address of the server you wish to connect.

- argentina.mait.local
- belize.mait.local
- chile.mait.local
- 134.29.228.104 (on campus or vpn access)

- honduras.dragon.local
- panama.dragon.local
- peru.dragon.local

Instead of choosing connect, select the options button.



Remote Desktop Connection

General | Display | Local Resources | Programs | Experience | Advanced

Logon settings

Enter the name of the remote computer.

Computer: 134.29.228.104

User name: MAIT\preussZenon

You will be asked for credentials when you connect.

Allow me to save credentials

Connection settings


Save the current connection settings to an RDP file or open a saved connection.

Save Save As... Open...


Options Connect Help

This is an options screen. The user name is in the form of domain\samid.


At this point, select the Local Resources tab.




Recycle Bin



Adobe Reader
X



LibreOffice
3.6



Mozilla
Firefox

This option is under

Local Resources
Local devices and resources
More

Selecting these options can make your life easier later.

Remote Desktop Connection

Remote Desktop

Remote Desktop Connection

Remote Desktop Connection

Local devices and resources

Choose the devices and resources on this computer that you want to use in your remote session.

- Smart cards
- Ports
- Drives
 - Floppy Disk Drive (A:)
 - Local Disk (C:)
 - DVD Drive (D:)
 - Drives that I plug in later
- Other supported Plug and Play (PnP) devices

[Which devices can I use in my remote session?](#)

OK Cancel



Recycle Bin



Adobe Reader
X



LibreOffice
3.6



Mozilla
Firefox

Go back to the General tab to connect to the server.

Remote Desktop Connection

General | Display | Local Resources | Programs | Experience | Advanced

Logon settings

Enter the name of the remote computer.

Computer: 134.29.228.104

User name:

You will be asked for credentials when you connect.

Allow me to save credentials

Connection settings

Save the current connection settings to an RDP file or open a saved connection.

Save Save As... Open...

Options Connect Help



Recycle Bin



Adobe Reader
X



LibreOffice
3.6



Mozilla
Firefox

These are the recommended connection options.



Remote Desktop Connection

Do you trust this remote connection?

This remote connection could hamper your local or remote computer. Make sure that you trust the remote computer before you connect.

Type: Remote Desktop Connection
Remote computer: 134.29.228.104

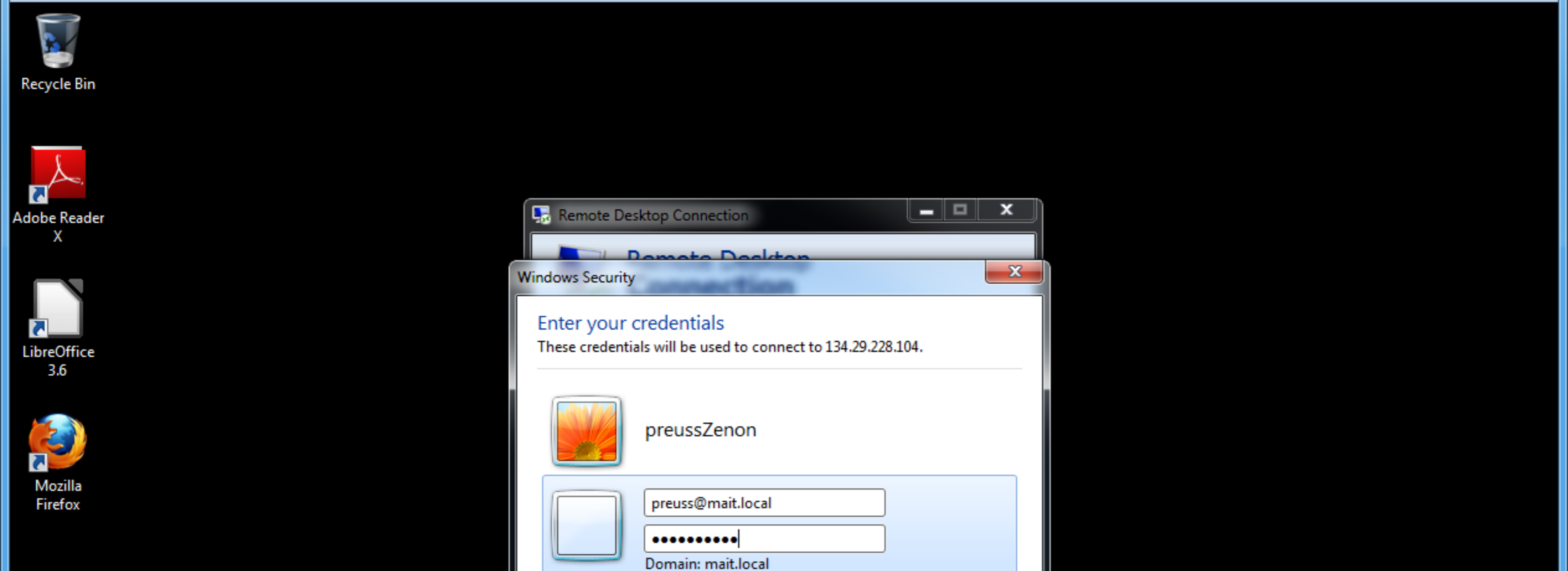
Don't ask me again for connections to this computer

Allow the remote computer to access the following resources on my computer:

Drives Clipboard

Changes to these options apply to this connection only.

Details Connect Cancel




Remote Desktop Connection

Windows Security

Enter your credentials

These credentials will be used to connect to 134.29.228.104.

 preussZenon

Domain: mait.local

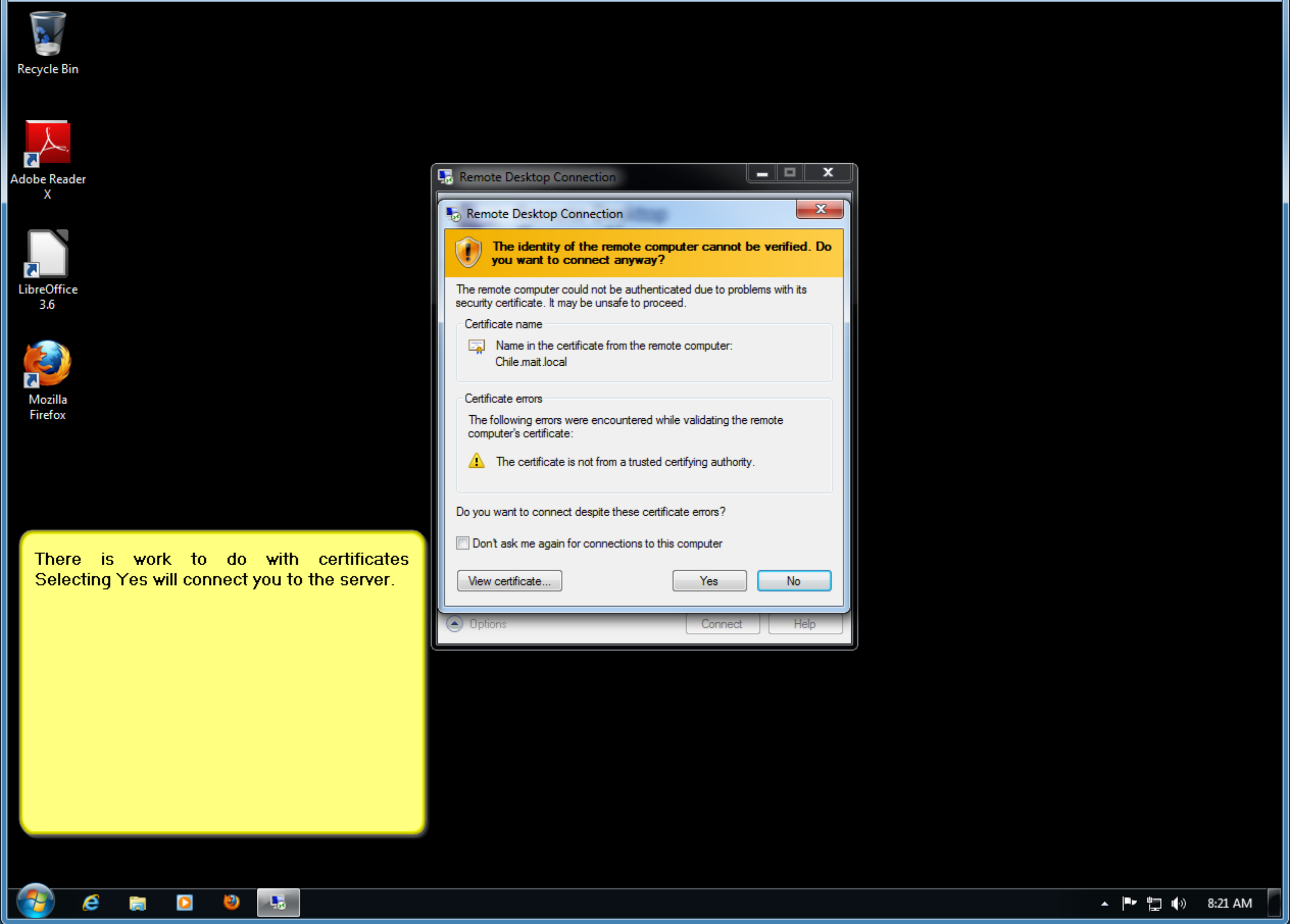
Remember my credentials

OK Cancel

Options Connect Help

The preusszenon logon name is the old samic method.

The preuss@mait.local is using the upn to logon.



There is work to do with certificates
Selecting Yes will connect you to the server.

Remote Desktop Connection

The identity of the remote computer cannot be verified. Do you want to connect anyway?

The remote computer could not be authenticated due to problems with its security certificate. It may be unsafe to proceed.

Certificate name

Name in the certificate from the remote computer:
Chile.mait.local

Certificate errors

The following errors were encountered while validating the remote computer's certificate:

The certificate is not from a trusted certifying authority.

Do you want to connect despite these certificate errors?

Don't ask me again for connections to this computer

View certificate... Yes No

Options Connect Help



Recycle Bin

Successful server connect is done.