

How to Setup Adobe Flash on LabConnection on DVD by dti publishing

This shows how to configure Adobe Flash Player 10.3 and Internet Explorer 9.0.8112. The demonstration is on a virtual machine running Windows 7 x64. This does not show working with the activation code.

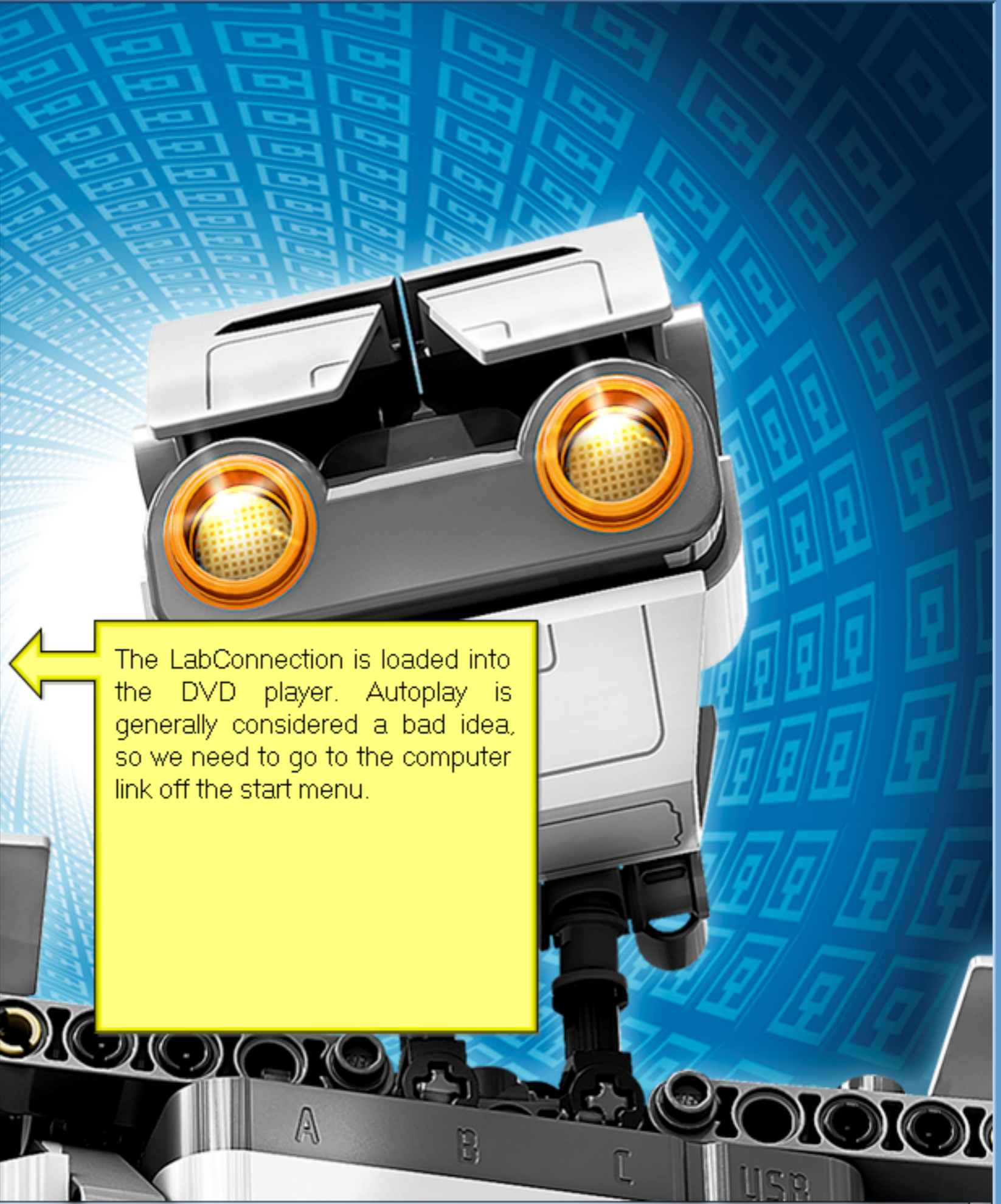
Preuss

9/26/2011



- Getting Started
 - Connect to a Projector
 - Calculator
 - LibreOffice 3.4
 - Sticky Notes
 - Snipping Tool
 - Remote Desktop Connection
 - Paint
 - XPS Viewer
 - Windows Fax and Scan
 - Magnifier
-
- All Programs
- Search programs and files

- preuss
- Documents
- Pictures
- Music
- Videos
- Downloads
- Games
- Computer
- Network
- Control Panel
- Devices and Printers
- Default Programs
- Administrative Tools
- Help and Support
- Run...
- Shut down



← The LabConnection is loaded into the DVD player. Autoplay is generally considered a bad idea, so we need to go to the computer link off the start menu.

- Recycle Bin
- LEGO MINDSTORMS NXT 2.0
- Adobe Reader X
- LibreOffice 3.4
- Mozilla Firefox

Computer > Search Computer

Organize System properties Uninstall or change a program Map network drive >>

Hard Disk Drives (1)

- Local Disk (C:) 21.7 GB free of 39.8 GB

Devices with Removable Storage (2)

- Floppy Disk Drive (A:)
- DVD RW Drive (D:) LabConnection 0 bytes free of 104 MB CDFS

Computer Network

TEMPLATE-WIN7 Workgroup: WORKGROUP Memory: 2.00 GB Processor: Intel(R) Core(TM)2 Duo ...

The LabConnection DVD is loaded in the DVD player.

Recycle Bin

LEGO MINDSTORMS NXT

Adobe Reader X

LibreOffice 3.4

Mozilla Firefox

Computer > Search Computer

Organize Eject Burn to disc Properties System properties

Hard Disk Drives (1)

Local Disk (C:) 21.7 GB free of 39.8 GB

Devices with Removable Storage (2)

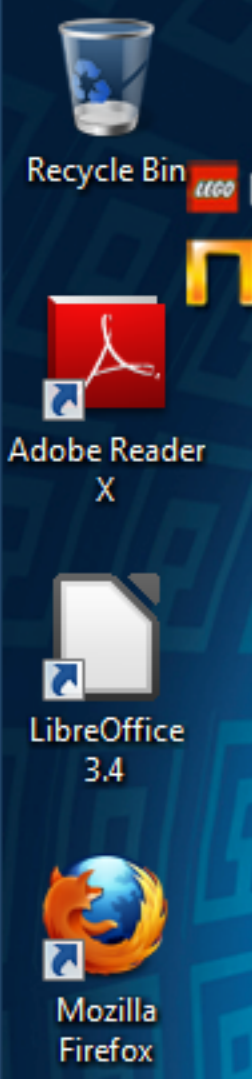
DVD RW Drive (D:) LabConnection 0 bytes free of 104 MB

CD Drive

Space free: 0 bytes
Total size: 104 MB
File system: CDFS

Open
Open in new window
Scan with Microsoft Security Essentials...
Share with
Burn to disc
Format...
Eject
Copy
Paste
Create shortcut
Properties

We need to open the LabConnection DVD.



Computer > DVD RW Drive (D:) LabConnection

Search DVD RW Drive (D:) LabConne...

Organize Burn to disc

Name	Date modified	Type	Size
Files Currently on the Disc (6)			
Labs	2/25/2011 10:01 AM	File folder	
ActiveContent_70642	2/25/2011 10:01 AM	Firefox Document	11 KB
autorun	2/25/2011 10:01 AM	Windows Batch File	1 KB
autorun	2/25/2011 10:01 AM	Setup Information	1 KB
LabConnect DVD First Launch Instruct...	2/25/2011 10:01 AM	Adobe Acrobat D...	340 KB
	2/25/2011 10:01 AM	PNG image	3 KB

6 items

The default browser on this computer is Firefox. We need to use Internet Explorer. We will right click on the ActiveContent_70642 file. We will ignore the autorun files.

- Recycle Bin
- LEGO MINDSTORMS NXT
- Adobe Reader X
- LibreOffice 3.4
- Mozilla Firefox

Computer > DVD RW Drive (D:) LabConnection

Search DVD RW Drive (D:) LabConne...

Organize Burn to disc

Name	Date modified	Type	Size
Files Currently on the Disc (6)			
Labs	2/25/2011 10:01 AM	File folder	
ActiveContent_70642		Document	11 KB
autorun		Batch File	1 KB
autorun			
LabConnection DVD			
logo			

Context menu for ActiveContent_70642:

- Open
- Scan with Microsoft Security Essentials...
- Open with
 - vm Default Host Application
 - Firefox
 - Internet Explorer
 - LibreOffice Calc
 - LibreOffice Writer
 - Choose default program...
- Send to
- Copy

We used a right click on the ActiveContent_70642 file. We select open with, select Internet Explorer.

ActiveContent_70642 Date modified: 2/25/2011 10:01 AM Date created: 2/25/2011 10:01 AM
 Firefox Document Size: 10.6 KB



LabConnection for MCITP 70-642

Maps to: MCTS Guide to Microsoft Windows Server 2008 Network Infrastructure Configuration, Exam 70-642, by Michael Bender. ISBN 1-423-90236-X

Content covered	Labs			
Chapters 1 - 4	Chapter 1 - Lab	Chapter 2 - Lab	Chapter 3 - Lab	Chapter 4 - Lab
Chapters 5 - 8	Chapter 5 - Lab	Chapter 6 - Lab	Chapter 7 - Lab	Chapter 8 - Lab
Chapters 9 - 11	Chapter 9 - Lab	Chapter 10 - Lab	Chapter 11 - Lab	

We already entered our activation code. We now must select one of the chapters. We will choose chapter 1 - Lab.



Browser window showing address bar: D:\ActiveContent_70642.html

Browser tabs: Table of Contents

Navigation buttons: Back, Forward, Home, Star, Settings

Back



We are now at the screen to setup Adobe Flash Player.



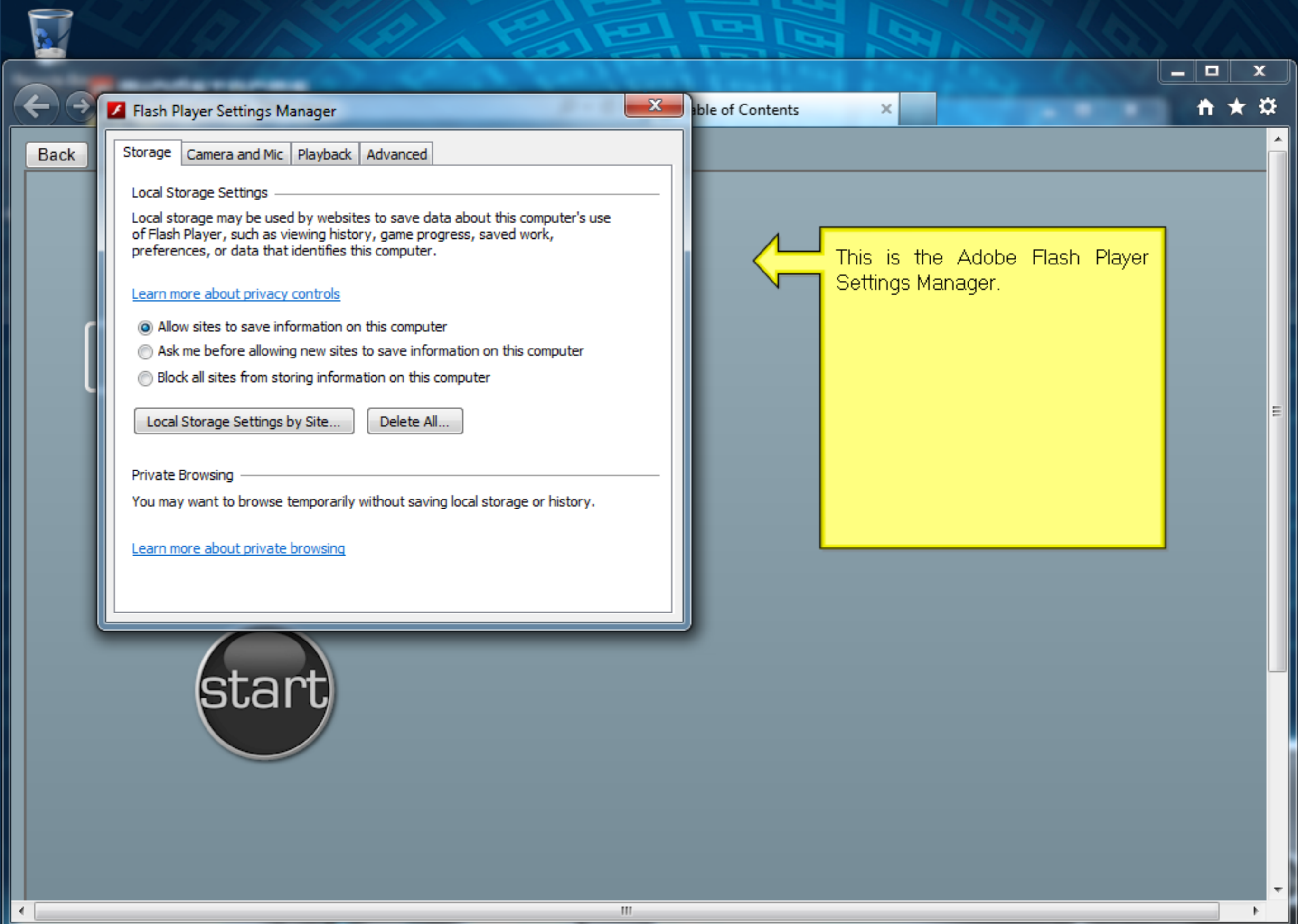


Back

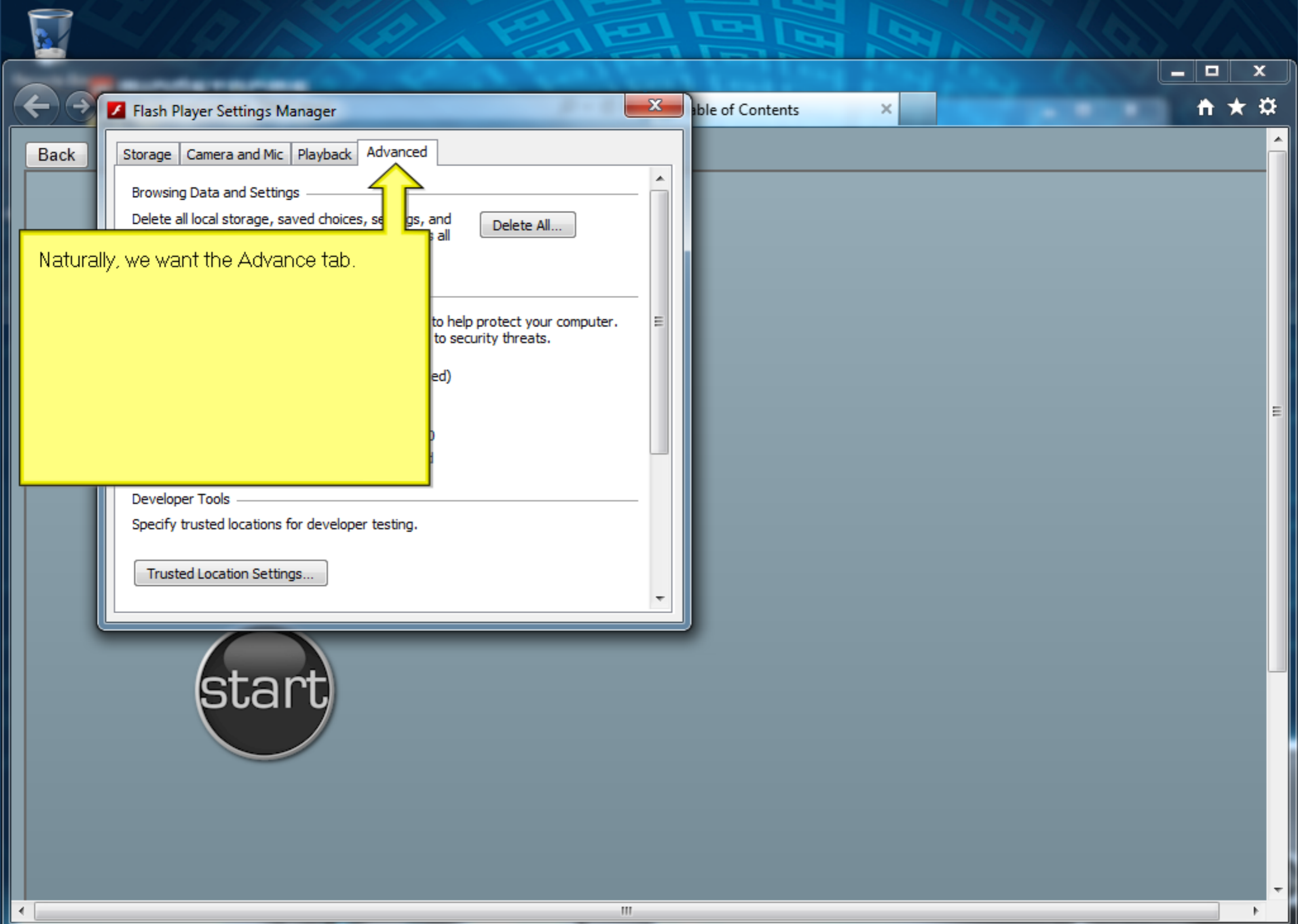


We did a right click on the blue screen area. This should provide a menu like the one to the left. We want the Global Settings.

- Print...
- Settings...
- Global Settings...
- About Adobe Flash Player 10.3.183.10...



← This is the Adobe Flash Player Settings Manager.



Naturally, we want the Advance tab.



Flash Player Settings Manager

Storage | Camera and Mic | Playback | **Advanced**

Back

Browsing Data and Settings

Delete all local storage, saved choices, settings, and other data used by content in Flash Player across all browsers on this computer. Delete All...

Updates

Flash Player can automatically check for updates to help protect your computer. Not updating may leave this computer vulnerable to security threats.

Check for updates automatically (recommended)
 Never check for updates (not recommended)

Check Now ActiveX Version: 10.3.183.10
 Plug-in Version: Not installed

Developer Tools

Specify trusted locations for developer testing.

Trusted Location Settings...

Trusted Location Settings

For security, Flash Player blocks content from accessing both files on this computer and the Internet. Developers can add exceptions below for trusted content.

[Learn more about Trusted Locations](#)

Trusted File or Folder Location

Add... Remove Close

On the Advance tab, select Trusted Location Settings to get the menu at the left.

The screenshot shows the Flash Player Settings Manager window with the 'Advanced' tab selected. The 'Browsing Data and Settings' section includes a 'Delete All...' button. The 'Updates' section has two radio buttons: 'Check for updates automatically (recommended)' (selected) and 'Never check for updates (not recommended)'. Below these are 'Check Now', 'ActiveX Version: 10.3.183.10', and 'Plug-in Version: Not installed'. The 'Developer Tools' section has a 'Trusted Location Settings...' button. Overlaid on this is the 'Trusted Location Settings' dialog box, which contains an 'Add Site' sub-dialog. The 'Add Site' dialog has a 'Website Domain:' text box, 'Add File...' and 'Add Folder...' buttons, and 'Confirm' and 'Cancel' buttons. A yellow arrow points from a text box to the 'Add Folder...' button.

At the bottom of Trusted Location Settings, we select Add. Then we select Add Folder.



Flash Player Settings Manager

Storage Camera and Mic Playback Advanced

Back

Table of Contents

Browsing Data and Settings

Delete all local storage, saved choices, settings, and other data used by content in Flash Player across all browsers on this computer. Delete All...

Updates

Flash Player can automatically check for updates to help protect your privacy. Not updating may leave this computer vulnerable to security risks.

Check for updates automatically (recommended)

Never check for updates (not recommended)

Check Now ActiveX Version: 10.3.183.10
Plug-in Version: Not installed

Developer Tools

Specify trusted locations for developer testing.

Trusted Location Settings...

Browse for Folder

- Desktop
 - Network
 - Libraries
 - preuss
 - Computer
 - Floppy Disk Drive (A:)
 - Local Disk (C:)
 - DVD RW Drive (D:) LabConnection**

OK Cancel

We choose to browse to our folder. We select our DVD drive that contains the LabConnection DVD.

Flash Player Settings Manager

Storage Camera and Mic Playback **Advanced**

Back

Browsing Data and Settings

Delete all local storage, saved choices, settings, and other data used by content in Flash Player across all browsers on this computer. Delete All...

Updates

Flash Player can automatically check for updates to help protect your computer. Not updating may leave this computer vulnerable to security threats.

Check for updates automatically (recommended)
 Never check for updates (not recommended)

Check Now ActiveX Version: 10.3.183.10
 Plug-in Version: Not installed

Developer Tools

Specify trusted locations for developer testing.

Trusted Location Settings...

Trusted Location Settings

Add Site

Website Domain:
 D:\

Add File... Add Folder...

Confirm Cancel

Close

Our DVD drive is D:, so the above listing is correct. We may select the confirm button.

Flash Player Settings Manager

Storage Camera and Mic Playback **Advanced**

Browsing Data and Settings

Delete all local storage, saved choices, settings, and other data used by content in Flash Player across all browsers on this computer. Delete All...

Updates

Flash Player can automatically check for updates to help protect your computer. Not updating may leave this computer vulnerable to security threats.

Check for updates automatically (recommended)
 Never check for updates (not recommended)

Check Now ActiveX Version: 10.3.183.10
 Plug-in Version: Not installed

Developer Tools

Specify trusted locations for developer testing.

Trusted Location Settings...

Trusted Location Settings

For security, Flash Player blocks content from accessing both files on this computer and the Internet. Developers can add exceptions below for trusted content.

[Learn more about Trusted Locations](#)

Trusted File or Folder Location
D:\

Add... Remove Close

Our DVD drive is successfully listed, we may select Close at this point.



Flash Player Settings Manager

Storage Camera and Mic Playback **Advanced**

Back

Browsing Data and Settings

Delete all local storage, saved choices, settings, and other data used by content in Flash Player across all browsers on this computer. Delete All...

Updates

Flash Player can automatically check for updates to help protect your computer. Not updating may leave this computer vulnerable to security threats.

- Check for updates automatically (recommended)
- Never check for updates (not recommended)

Check Now ActiveX Version: 10.3.183.10
 Plug-in Version: Not installed

Developer Tools

Specify trusted locations for developer testing.

Trusted Location Settings...

Table of Contents

start

← We are done with the Adobe Flash Player Settings Manager. We may close the window.



Internet Explorer browser window showing the address bar with the URL `D:\ActiveContent_70642.html` and a tab titled "Table of Contents".

LabConnection for MCITP 70-642

Maps to: MCTS Guide to Microsoft Windows Server 2008 Network Infrastructure Configuration, Exam 70-642, by Michael Bender. ISBN 1-423-90236-X

Content covered	
Chapters 1 - 4	Chapter 1
Chapters 5 - 8	Chapter 5
Chapters 9 - 11	Chapter 9

We need to reload our web page with the new Adobe Flash Player settings. We select reload to continue. Then, we select a chapter. We will start with chapter 1.



Internet Explorer browser window showing the address bar with "D:\ActiveContent_70642.html" and a tab titled "Table of Contents". Navigation buttons (Back, Forward, Home, Stop, Refresh) and window controls (Minimize, Maximize, Close) are visible.

Back

LabConnection[®]

Chapter 1 - Lab 1

In this lab, you'll explore the different editions of Windows Server 2008. You'll also familiarize yourself with the Initial Configuration Tasks window, and begin to explore Server Manager. Click Start when you are ready to begin.



We are now ready to continue with the lab. We select the start button.



LabConnection®

← Previous
Next →
↺ Reset
↻ Skip This Step
🎧 Replay
📷 Show Me

Your first task will be to determine whether the client's current computers meet the minimum _____ of Windows Server 2008. Enter your answer in the space below.

Our first question for Chapter 1.