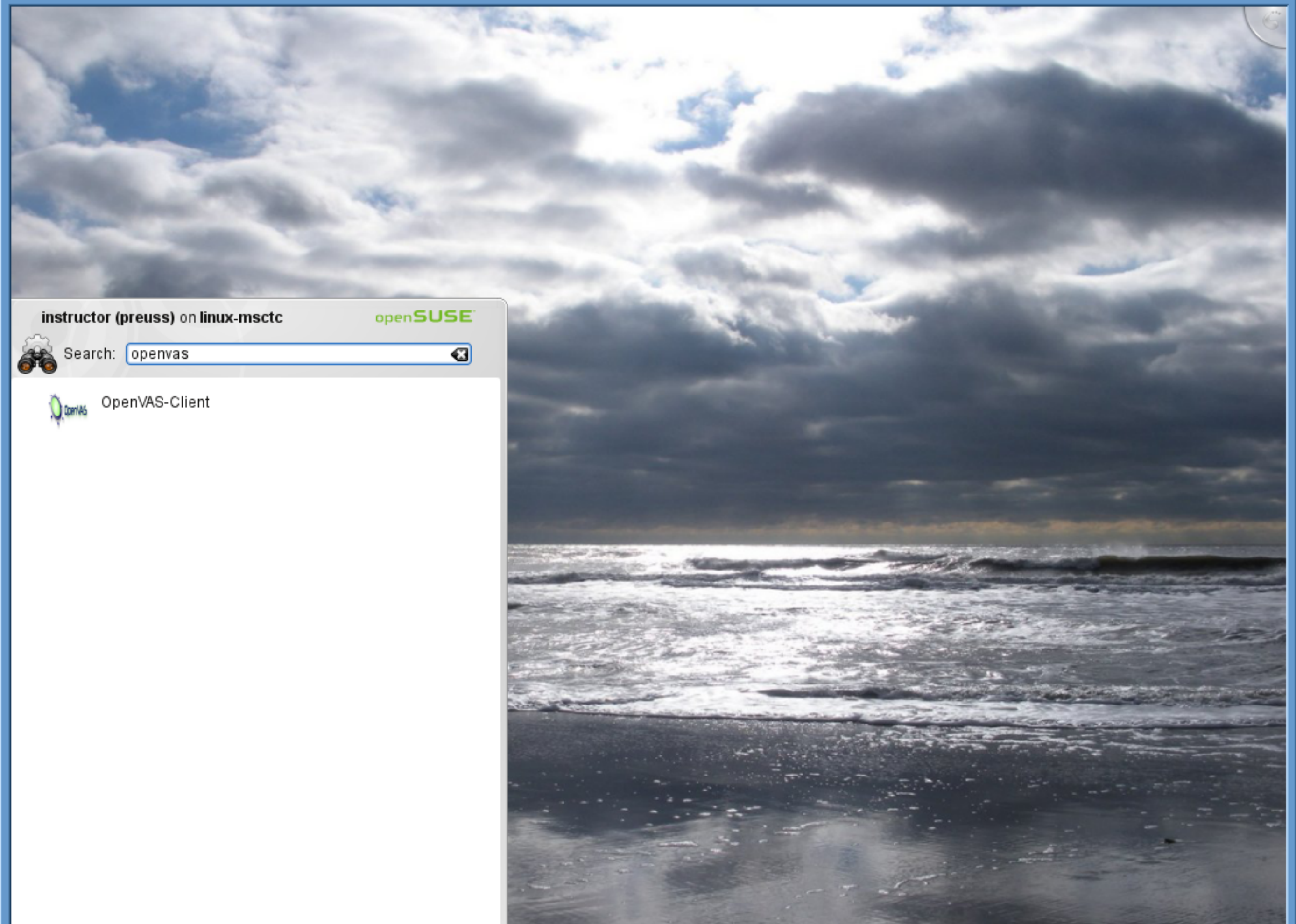


This pdf shows the a way to run OpenVAS by connecting to the class OpenVAS server. You must have permission from the network owner before running these tests. Remember you must have non-repudiation in your permission.

This example uses the class OpenSUSE server configured by the instructor.



instructor (preuss) on linux-msctc

openSUSE



Search:



OpenVAS-Client

Name	Type	High	Medium	Low
Global OTP Settings	global			

OpenVAS-Client

Global OTP Settings

Comments Options Report

- General
- Plugins
- Credentials
- Target selection
- Access Rules
- Prefs.
- KB

General scan options

Port range:

Consider unscanned ports as closed

Hosts to test concurrently:

Checks to perform concurrently:

Path to the CGIs:

Do a reverse lookup on the IP before testing it

Optimize the test

Safe checks

Designate hosts by their MAC address

Port scanner:

Message log

^ Welcome to OpenVAS-Client, <http://www.openvas.org/>

▢ NessusClient origin: Copyright 1998-2007 by Renaud Deraison

▢ New code since OpenVAS-Client: Copyright 2007, 2008, 2009 Greenbone Networks GmbH

▾ Authors: Renaud Deraison, Thomas Arendsen Hein, Jan Oliver Wagner, Bernhard Herzog, Michel Arboi (SSL Support), Bruce Verderame (Pie/Chart)

not connected

File View Manager Task Scope Report Extras Help

- Connect
- Disconnect
- Scan Assistant
- Preferences
- Save Global OTP Settings
- Quit Ctrl+Q

Global OTP Settings

Comments Options Report

- General
- Plugins
- Credentials
- Target selection
- Access Rules
- Prefs.
- KB

General scan options

Port range:

Consider unscanned ports as closed

Hosts to test concurrently:

Checks to perform concurrently:

Path to the CGIs:

Do a reverse lookup on the IP before testing it

Optimize the test

Safe checks

Designate hosts by their MAC address

Port scanner:

Message log

Welcome to OpenVAS-Client, <http://www.openvas.org/>

NessusClient origin: Copyright 1998-2007 by Renaud Deraison

New code since OpenVAS-Client: Copyright 2007, 2008, 2009 Greenbone Networks GmbH

Authors: Renaud Deraison, Thomas Arendsen Hein, Jan Oliver Wagner, Bernhard Herzog, Michel Arboi (SSL Support), Bruce Verderame (Pie/Chart)

not connected

Name	Type	High	Medium	Low
Global OTP Settings	global			

Connect to OpenVAS Server

OpenVAS Server

Hostname: localhost Port: 9390

Authentication

Login: preuss

Password:

Authentication by certificate

Trusted CA: cacert.pem

User Certificate File:

User Key File:

default

ports as closed

ly: 20

currently: 4

/cgi-bin:/scripts

on the IP before testing it

their MAC address

Message log

- Welcome to OpenVAS-Client, <http://www.openvas.org>
- NessusClient origin: Copyright 1998-2007 by Greenbone Networks GmbH
- New code since OpenVAS-Client: Copyright 2007, 2008, 2009 Greenbone Networks GmbH
- Authors: Renaud Deraison, Thomas Arndsen Hein, Jan Oliver Wagner, Bernhard Herzog, Michel Arboi (SSL Support), Bruce Verderame (Pie/Chart)

not connected

OpenVAS-Client

File View Manager Task Scope Report Extras Help

Global OTP Settings

Comments Options Report

Global OTP Settings global

Connect to OpenVAS Server

OpenVAS Server

Hostname: 192.168.5.12 Port: 9390 Default

Authentication

Login: preuss

Password: [masked]

Authentication by certificate

Trusted CA: cacert.pem Select ...

User Certificate File: Select ...

User Key File: Select ...

Cancel OK

not connected

This is not the IP address for the class OpenVAS server.

Global OTP Settings

Comments Options Report

General

Name	Type	High	Medium	Low
Global OTP Settings	global			

Connect to OpenVAS Server

OpenVAS Server

Hostname: 192.168.5.12 Port: 9390

Default

SSL Setup

Please choose your level of SSL paranoia (Hint: if you want to manage many servers from your client, choose 2. Otherwise, choose 1. Or 3, if you are paranoid.)

- Display and remember the server certificate, do not care about the CA
- Trust the server certificate if and only if it is valid and certified by the CA
- Verify that the server certificate is valid *and* remember it

OK

Message log

Welcome to OpenVAS-Client, <http://www.openvas.org>

NessusClient origin: Copyright 1998-2007 by Greenbone Networks GmbH

New code since OpenVAS-Client: Copyright 2007, 2008, 2009 Greenbone Networks GmbH

Authors: Renaud Deraison, Thomas Arndsen Hein, Jan Oliver Wagner, Bernhard Herzog, Michel Arboi (SSL Support), Bruce Verderame (Pie/Chart)

not connected



Name	Type	High	Medium	Low
Global OTP Settings	global			

Global OTP Settings

Comments Options Report

General

Connect to OpenVAS Server

OpenVAS Server

Hostname: Port:

Authentication

Login:

Password:

Connecting ...

Connecting to OpenVAS server "192.168.5.12" ...

Receiving plugins: 11700

User Certificate File:

User Key File:

and ports as closed

ty:

currently:

o on the IP before testing it

their MAC address

Message log

new code since OpenVAS-Client. Copyright 2010
 Authors: Renaud Deraison, Thomas Arendse
 [Wed Mar 23 17:11:05 2011] Error: Login failed

not connected



Name	Type	High	Medium	Low
Global OTP Settings	global			

Global OTP Settings

Comments Options Report

General

Connect to OpenVAS Server

OpenVAS Server

Hostname: 192.168.5.12 Port: 9390

Authentication

Login: preuss

Password:

Found and enabled 20808 new plugins.

User Certificate File:

User Key File:

and ports as closed

ty:

currently:

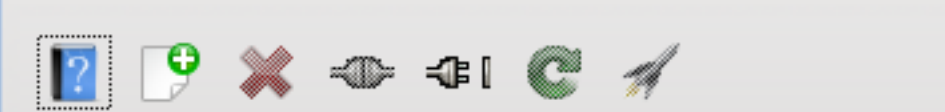
Message log

Authors: Renaud Deraison, Thomas Arentzen

[Wed Mar 23 17:11:05 2011] Error: Login failed

[Wed Mar 23 17:11:59 2011] Info: Found and enabled 20808 new plugins

not connected



Name	Type	High	Medium	Low
Global OTP Settings	global			

Global OTP Settings

Comments Options Report

- General
- Plugins**
- Credentials
- Target selection
- Access Rules
- Prefs.
- KB

Plugin selection

Name	Warning	Active
▶ AIX Local Security Checks		<input checked="" type="checkbox"/>
▶ Brute force attacks		<input checked="" type="checkbox"/>
▶ Buffer overflow		<input checked="" type="checkbox"/>
▶ CentOS Local Security Checks		<input checked="" type="checkbox"/>

20808 plugins; 20808 enabled

No filter active

Dependencies: Enable at runtime Silent

Automatically enable new plugins

Global NVT Timeout (sec):

Message log

Authors: Renaud Deraison, Thomas Arentsen Hein, Jan-Oliver Wagner, Bernhard Herzog, Michel Arbol (SSL-Support), Bruce Verderame (Fier/Chan)

[Wed Mar 23 17:11:05 2011] Error: Login failed

[Wed Mar 23 17:11:59 2011] Info: Found and enabled 20808 new plugins.

Connection: preuss@192.168.5.12

- Connect
- Disconnect
- Scan Assistant
- Preferences
- Save Global OTP Settings
- Quit Ctrl+Q

Global OTP Settings

- Comments
- Options
- Report
- General
- Plugins**
- Credentials
- Target selection
- Access Rules
- Prefs.
- KB

Plugin selection

Name	Warning	Active
▶ AIX Local Security Checks		<input checked="" type="checkbox"/>
▶ Brute force attacks		<input checked="" type="checkbox"/>
▶ Buffer overflow		<input checked="" type="checkbox"/>
▶ CentOS Local Security Checks		<input checked="" type="checkbox"/>

20808 plugins; 20808 enabled

No filter active

- Enable all
- Disable all
- Expand all
- Collapse all

Dependencies

- Automatic

Global NVT

Please select Scan Assistant to continue.

Message log

Authors: Renaud Deraison, Thomas Arentsen Hein, Jan-Oliver Wagner, Bernhard Herzog

[Wed Mar 23 17:11:05 2011] Error: Login failed

[Wed Mar 23 17:11:59 2011] Info: Found and enabled 20808 new plugins.

Connection: preuss@192.168.5.12

Name	Type	High	Medium	Low
Global OTP Settings	global			

Global OTP Settings

Comments Options Report

General Plugins

Plugin selection

Scan Assistant

Step 1: Task Step 2: Scope Step 3: Targets Step 4: Execute

Tasks describe what you want to do. You can use it to logically group your duties by subject, frequency, location or anything else.
Possible task names are:

- Weekly checks
- Customer XYZ
- Hosts of project ABC

You should also enter a comment further explaining the task.

Please enter a name for your task:

Vines Test

Comment:

This will run OpenVAS against Vines.

Back Cancel Forward

Warning Active

	<input checked="" type="checkbox"/>
	<input checked="" type="checkbox"/>
	<input checked="" type="checkbox"/>
	<input checked="" type="checkbox"/>

Filter...

Disable all

Collapse all

Silent

Message log

Authors: Renaud Deraison, Thomas Archenholtz, Jan Oliver Wagner, Bernhard Herzog, Michael Arbor (OSSE-Support), Bruce Verderame (Pie/Chan)

[Wed Mar 23 17:11:05 2011] Error: Login failed

[Wed Mar 23 17:11:59 2011] Info: Found and enabled 20808 new plugins.

Connection: preuss@192.168.5.12

Name	Type	High	Medium	Low
Global OTP Settings	global			

Global OTP Settings

Comments Options Report

General Plugins

Plugin selection

Scan Assistant

Step 1: Task Step 2: Scope Step 3: Targets Step 4: Execute

Scopes are part of a task. Each scope represents a connection to a OpenVAS Server and a list of hosts to scan.
Possible scopes names are:

- Internet servers (e.g. in task "Weekly Checks")
- Application servers (e.g. in task "Customer XYZ")
- Workstations (e.g. in task "Hosts of project ABC")

You should also enter a comment further explaining the scope.

Please enter a name for the current scope:

Vines

Comment:

This is Vines IP address.

Back Cancel Forward

Warning Active

	<input checked="" type="checkbox"/>
	<input checked="" type="checkbox"/>
	<input checked="" type="checkbox"/>
	<input checked="" type="checkbox"/>

Filter...

Disable all

Collapse all

Silent

Message log

Authors: Renaud Deraison, Thomas Archenholtz, Jan Oliver Wagner, Bernhard Herzog, Michael Arbor (OSSE-Support), Bruce Verderame (Pie/Chan)

[Wed Mar 23 17:11:05 2011] Error: Login failed

[Wed Mar 23 17:11:59 2011] Info: Found and enabled 20808 new plugins.

Connection: preuss@192.168.5.12

Global OTP Settings

Comments Options Report

Name Type High Medium Low

Global OTP Settings global

General Plugins

Plugin selection

Scan Assistant

Step 1: Task Step 2: Scope Step 3: Targets Step 4: Execute

Targets are the hosts and networks you want to scan in this scope. They can be entered in the following formats:

- simple hostname (for hosts in your LAN)
- fully qualified host name (e.g. www.example.com)
- IP address (e.g. 192.168.0.1)
- IP network (e.g. 192.168.0.0/24 or 192.168.0.0/255.255.255.0)
- IP address with virtual host(s) (e.g. 192.168.0.1[www.example.com])

You can enter several targets by separating them with a comma.

Please enter the targets to scan:

192.168.5.4

Warning: Please make sure you are allowed to scan these hosts! Harmful checks are disabled by default, but some computers and especially print servers have bugs which might crash them. Consider getting a written permission before scanning important servers which are in production.

Back Cancel Forward

Warning Active

cks

Filter...

Disable all

Collapse all

time Silent

gins

Message log

Authors: Renaud Deraison, Thomas Archenault, Jan Oliver Wagner, Bernhard Herzog, Michael Arbor (OSSE-Support), Bruce Verderame (Pie/Chan)

[Wed Mar 23 17:11:05 2011] Error: Login failed

[Wed Mar 23 17:11:59 2011] Info: Found and enabled 20808 new plugins.

Connection: preuss@192.168.5.12

Name	Type	High	Medium	Low
Global OTP Settings	global			

Global OTP Settings

Comments Options Report

General Plugins

Plugin selection

Scan Assistant

Step 1: Task Step 2: Scope Step 3: Targets Step 4: Execute

You are now ready to start the scan.

When clicking on "Execute", the connection dialog will appear. You have to choose a Openvas Scanner which can reach the targets you have specified in the previous step.

Note: You need to have an account on this server. Contact your system administrator if you don't have one yet.

The scan progress window will inform you about the current status and allows you to stop scanning a single host or abort the whole scan.

To repeat this scan, select the scope which will be created now, and choose "Execute" from the toolbar or the "Scope" menu. Each scan will create a separate new report under the current Scope.

Back Cancel Execute

Warning Active

	<input checked="" type="checkbox"/>
	<input checked="" type="checkbox"/>
	<input checked="" type="checkbox"/>
	<input checked="" type="checkbox"/>

Filter...

Disable all

Collapse all

Silent

Message log

Authors: Renaud Deraison, Thomas Arnaudsson, Jan Oliver Wagner, Bernhard Herzog, Michael Arbor (OSSE-Support), Bruce Venudairme (Pie/Chan)

[Wed Mar 23 17:11:05 2011] Error: Login failed

[Wed Mar 23 17:11:59 2011] Info: Found and enabled 20808 new plugins.

Connection: preuss@192.168.5.12

OpenVAS-Client

File View Manager Task Scope Report Extras Help

Scope: Vines (Task: Vines Test)

Comments Options Report

General Plugin selection

Name Type High Medium

Global OTP Settings global

Vines Test task

Vines scope

Warning Active

Filter...

Disable all

Collapse all

ble at runtime Silent

not connected

Connect to OpenVAS Server

OpenVAS Server

Hostname: 192.168.5.12 Port: 9390 Default

Authentication

Login: preuss

Password:

Authentication by certificate

Trusted CA: cacert.pem Select ...

User Certificate File: Select ...

User Key File: Select ...

Cancel OK

We need to login again to run the newly created test.

Message log

Authors: Renaud Deraison, Thomas Arentz

[Wed Mar 23 17:11:05 2011] Error: Login failed

[Wed Mar 23 17:11:59 2011] Info: Found and

OpenVAS-Client

File View Manager Task Scope Report Extras Help

Scope: Vines (Task: Vines Test)

Comments Options Report

General Plugin selection

Name Type High Medium

Global OTP Settings global

Vines Test task

Vines scope

Warning Active

Filter...

Disable all

Collapse all

ble at runtime Silent

e new plugins

c): 320

or (SSL-support), Bruce Verderame (FireChan

not connected

Connect to OpenVAS Server

OpenVAS Server

Hostname: 192.168.5.12 Port: 9390 Default

Authentication

Login: preuss

Password: ●●●●●●●●

Connecting ...

cacert.pem Select ...

User Certificate File: Select ...

User Key File: Select ...

Cancel OK

Message log

Authors: Renaud Deraison, Thomas Arentzen

[Wed Mar 23 17:11:05 2011] Error: Login failed

[Wed Mar 23 17:11:59 2011] Info: Found and

Name	Type	High	Medium
Global OTP Settings	global		
Vines Test	task		
Vines	scope		

OpenVAS-Client

Scope: Vines (Task: Vines Test)

Comments Options Report

- General
- Credentials
- Target selection
- Access Rules
- Prefs.
- KB

Plugin selection

Name	Warning	Active
▶ AIX Local Security Checks		<input checked="" type="checkbox"/>
▶ Brute force attacks		<input checked="" type="checkbox"/>
▶ Buffer overflow		<input checked="" type="checkbox"/>
▶ CentOS Local Security Checks		<input checked="" type="checkbox"/>

20808 plugins; 20808 enabled

No filter active Filter...

Enable all Disable all

Expand all Collapse all

Dependencies: Enable at runtime Silent

Automatically enable new plugins

Global NVT Timeout (sec)

It took about 20 minutes to run all the tests against one machine. A subnet range will take longer.

Scanning network from 192.168.5.12

Hostname	Portscan	Checks	Stop
192.168.5.4	98 %	0 %	<input type="checkbox"/>

Stop the whole test

Message

Auto

[Wed

[Wed

808 new plugins.

Connection: preuss@192.168

OpenVAS-Client

File View Manager Task Scope Report Extras Help

Name	Type	High	Medium
Global OTP Settings	global		
▼ Vines Test	task		
Vines	scope		

Scope: Vines (Task: Vines Test)

Comments Options Report

- General
- Credentials
- Target selection
- Access Rules
- Prefs.
- KB

Plugin selection

Name	Warning	Active
▶ AIX Local Security Checks		<input checked="" type="checkbox"/>
▶ Brute force attacks		<input checked="" type="checkbox"/>
▶ Buffer overflow		<input checked="" type="checkbox"/>
▶ CentOS Local Security Checks		<input checked="" type="checkbox"/>

20808 plugins; 20808 enabled

No filter active

Dependencies: Enable at runtime Silent

Automatically enable new plugins

Global NVT Timeout (sec)

Message log

Authors: Renaud Deraison, Thomas Arentsen Hein, Jan-Oliver Wagner, Bernhard Herzog, Michiel Arbo

[Wed Mar 23 17:11:05 2011] Error: Login failed

[Wed Mar 23 17:11:59 2011] Info: Found and enabled 20808 new plugins.

Connection: preuss@192.168

Scanning network from 192.168.5.12

Hostname	Portscan	Checks	Stop
192.168.5.4	100 %	30 %	<input type="checkbox"/>

Name	Type	High	M
Global OTP Settings	global		
▼ Vines Test	task		
▼ Vines	scope		
Report 20110323-173407	report	0	

OpenVAS-Client

Scope: Vines (Task: Vines Test)

Comments Options Report

- General
- Plugins**
- Credentials
- Target selection
- Access Rules
- Prefs.
- KB

Plugin selection

Name	Warning	Active
▶ AIX Local Security Checks		<input checked="" type="checkbox"/>
▶ Brute force attacks		<input checked="" type="checkbox"/>
▶ Buffer overflow		<input checked="" type="checkbox"/>
▶ CentOS Local Security Checks		<input checked="" type="checkbox"/>

20808 plugins; 20808 enabled

No filter active

Dependencies: Enable at runtime Silent

Automatically enable new plugins

Global NVT Timeout (sec):

Message log

Authors: Renaud Deraison, Thomas Arelusen Hein, Jan-Oliver Wagner, Bernhard Herzog, Michel Arbol (SSL-Support), Bruce Verderame (FireChan)

[Wed Mar 23 17:11:05 2011] Error: Login failed

[Wed Mar 23 17:11:59 2011] Info: Found and enabled 20808 new plugins.

Connection: preuss@192.168.5.12

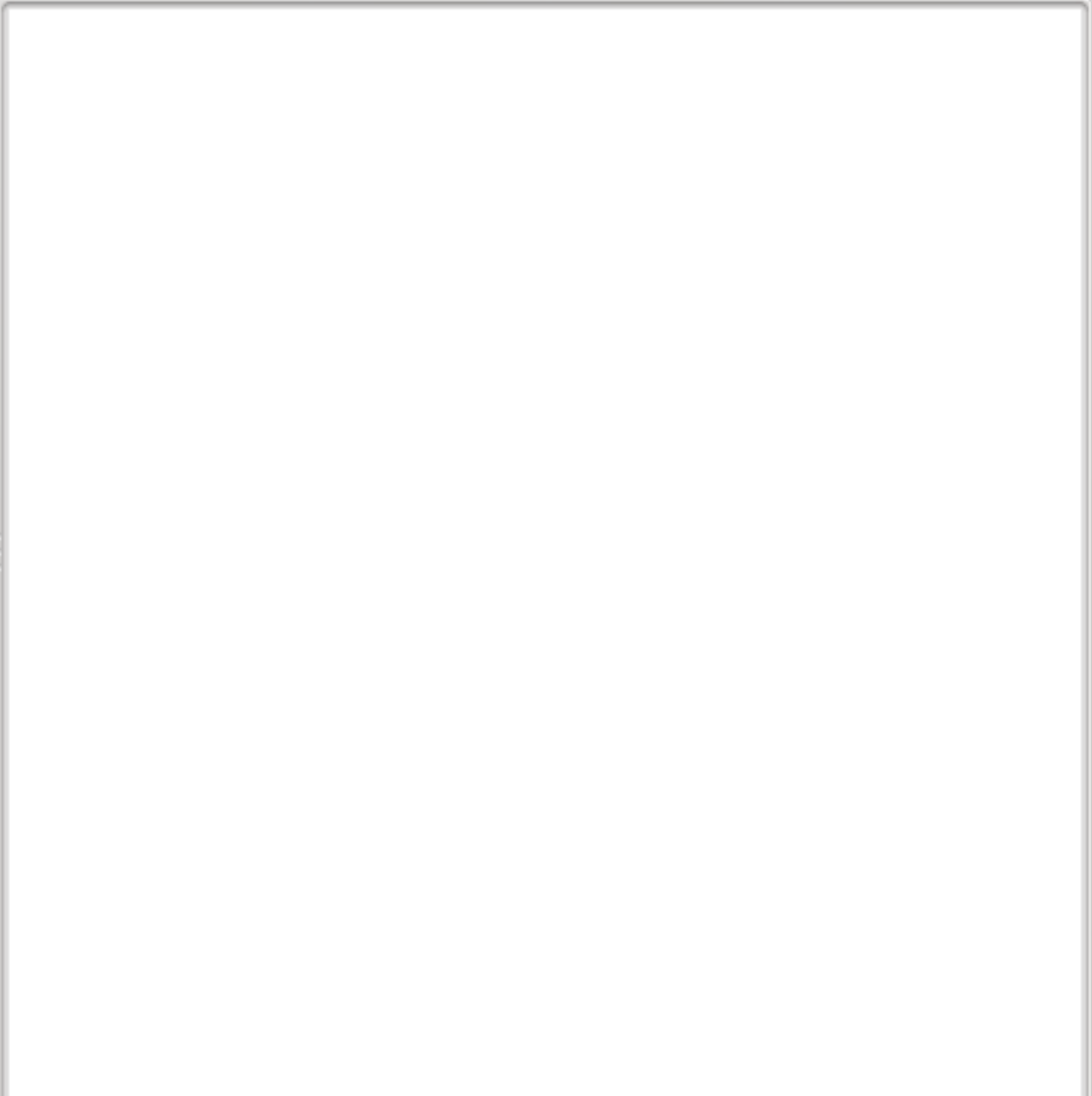
Name	Type	High	M
Global OTP Settings	global		
▼ Vines Test	task		
▼ Vines	scope		
Report 20110323-173407	report	0	

Report for scope: Vines (Task: Vines Test)

Comments Options Report

Host/Port/Severity

- ▼ 192.168.5.4
 - ▶ time (37/tcp)
 - ▶ ssh (22/tcp)
 - ▶ general/tcp
 - ▶ general/icmp
 - ▶ ftp (21/tcp)
 - ▶ general/HOST-T
 - ▶ general/CPE
 - ▶ ident (113/tcp)



Scan took place from Wed Mar 23 17:15:05 2011 to Wed Mar 23 17:32:45 2011

Message log

Authors: Renaud Deraison, Thomas Arentsen Hein, Jan-Oliver Wagner, Bernhard Herzog, Michel Arbol (SSL-Support), Bruce Verderame (Fier/Chan)

[Wed Mar 23 17:11:05 2011] Error: Login failed

[Wed Mar 23 17:11:59 2011] Info: Found and enabled 20808 new plugins.

not connected

Name	Type	High	M
Global OTP Settings	global		
▼ Vines Test	task		
▼ Vines	scope		
Report 20110323-173407	report	0	

OpenVAS-Client

Report for scope: Vines (Task: Vines Test)

Comments Options Report

Host/Port/Severity

- 192.168.5.4
 - time (37/tcp)
 - Security Note**
 - ssh (22/tcp)
 - general/tcp
 - general/icmp
 - ftp (21/tcp)
 - general/HOST-T
 - general/CPE
 - ident (113/tcp)

Reported by NVT "Services" (1.3.6.1.4.1.25623.1.0.10330):

A time server seems to be running on this port

Scan took place from Wed Mar 23 17:15:05 2011 to Wed Mar 23 17:32:45 2011

Message log

Authors: Renaud Deraison, Thomas Arentsen Hein, Jan-Oliver Wagner, Bernhard Herzog, Michel Arbol (SSL-Support), Bruce Verderame (FireChan)

[Wed Mar 23 17:11:05 2011] Error: Login failed

[Wed Mar 23 17:11:59 2011] Info: Found and enabled 20808 new plugins.

not connected

Name	Type	High	M
Global OTP Settings	global		
▼ Vines Test	task		
▼ Vines	scope		
Report 20110323-173407	report	0	

OpenVAS-Client

Report for scope: Vines (Task: Vines Test)

Comments Options Report

Host/Port/Severity

- ▼ 192.168.5.4
 - ▼ time (37/tcp)
 - Security Note
 - ▶ ssh (22/tcp)
 - ▼ general/tcp
 - Security Note
 - Log Message
 - ▼ general/icmp
 - Security Note
 - ▼ ftp (21/tcp)
 - Security Note
 - ▼ general/HOST-T
 - Log Message
 - ▶ general/CPE
 - ▶ ident (113/tcp)

Reported by NVT "Record route" (1.3.6.1.4.1.25623.1.0.12264):

Here is the route recorded between 192.168.5.12 and 192.168.5.192.168.5.4.

192.168.5.4.

192.168.5.4.

Scan took place from Wed Mar 23 17:15:05 2011 to Wed Mar 23 17:32:45 2011

Message log

Authors: Renaud Deraison, Thomas Arentsen Hein, Jan-Oliver Wagner, Bernhard Herzog, Michel Arbol (SSL-Support), Bruce Verderame (FireChan)

[Wed Mar 23 17:11:05 2011] Error: Login failed

[Wed Mar 23 17:11:59 2011] Info: Found and enabled 20808 new plugins.

not connected

- Name
- Global OTP Settings
- ▼ Vines Test
 - ▼ Vines
 - Report 20110323-173407

- Rename
- Delete
- Override severities
- Import
- Export
- Print

scope: Vines (Task: Vines Test)

Options Report

/Severity

- 192.168.5.4
- me (37/tcp)
- Security Note
- ssh (22/tcp)
- general/tcp
 - Security Note
 - Log Message
- general/icmp
 - Security Note
- ftp (21/tcp)
 - Security Note
- general/HOST-T
 - Log Message
- general/CPE
- ident (113/tcp)

Reported by NVT "Record route" (1.3.6.1.4.1.25623.1.0.12264):

Here is the route recorded between 192.168.5.12 and 192.168.5.4.

192.168.5.4.

192.168.5.4.

Scan took place from Wed Mar 23 17:15:05 2011

Message log

Authors: Renaud Deraison, Thomas Arentsen Hein, Jan-Oliver Wagner, Bernhard Herzog, Michiel Ar

[Wed Mar 23 17:11:05 2011] Error: Login failed

[Wed Mar 23 17:11:59 2011] Info: Found and enabled 20808 new plugins.

not connected

Please select export, so you may have a copy of the report.

File View M

Global OTF

Vines Test

Vines

Report

Export Report

New Folder Delete File Rename File

/home/preuss/Documents

Folders	Files
/	dragon01_02252011
./	dragon02_02252011_hub
tmp/	hosts
	New Document.ott
	New Spreadsheet.ots
	new.txt
	openvas_scan1.xml

Export Options

Report file format: XML

Selection: /home/preuss/Documents

openvas_1

OK Cancel

Task: Vines Test)

Report

Reported by NVT "Record route" (1.3.6.1.4.1.25623.1.0.12264):

Here is the route recorded between 192.168.5.12 and 192.168.5.4.

192.168.5.4.

192.168.5.4.

Log Message

- general/CPE
- ident (113/tcp)

Scan took place from Wed Mar 23 17:15:0

Please save the file as XML if you need to submit the report for reading.

Please save the report as NBE if you plan to review the finding in OpenVAS.

Message log

Authors: Renaud Deraison, Thomas Arentsen Hein, Jan-Oliver Wagner, Bernhard Herzog, ...

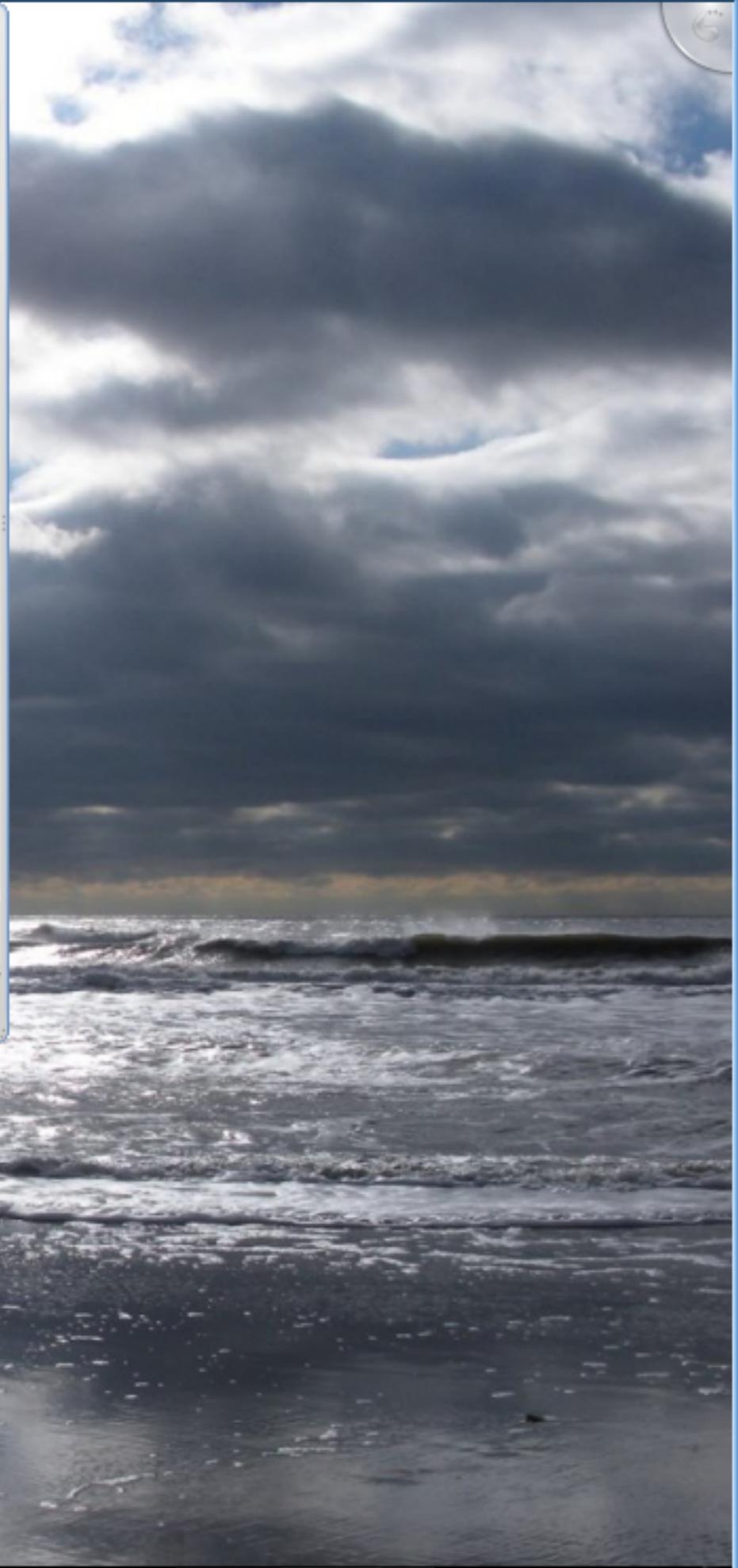
[Wed Mar 23 17:11:05 2011] Error: Login failed

[Wed Mar 23 17:11:59 2011] Info: Found and enabled 20808 new plugins.

```

Documents : bash
File Edit View Scrollback Bookmarks Settings Help
preuss@linux-msctc:~> ls
archive.tgz  Documents      Music      preuss1.txt  tar_list.txt  test4.txt
bin          Downloads      new2.doc   preuss2.txt  Templates     testmd5.txt
cptr2224.txt HOSTNAME.bak   new3.doc   Public       test1.txt     Videos
cptr2236.txt md5test.txt    new.txt    public_html  test2.txt
Desktop     me.txt         Pictures   set.txt      test3.txt
preuss@linux-msctc:~> cd Documents/
preuss@linux-msctc:~/Documents> ls
dragon01_02252011      New Document.ott      nmap_scan1.xml  test.gz
dragon02_02252011_hub New Spreadsheet.ots   openvas_1.xml   tmp
hosts                 new.txt               stream2
preuss@linux-msctc:~/Documents> less openvas_1.xml
preuss@linux-msctc:~/Documents> less openvas_1.xml
preuss@linux-msctc:~/Documents> ls
dragon01_02252011      New Document.ott      nmap_scan1.xml  stream2
dragon02_02252011_hub New Spreadsheet.ots   openvas_1.nbe   test.gz
hosts                 new.txt               openvas_1.xml   tmp
preuss@linux-msctc:~/Documents> █

```



Documents : bash